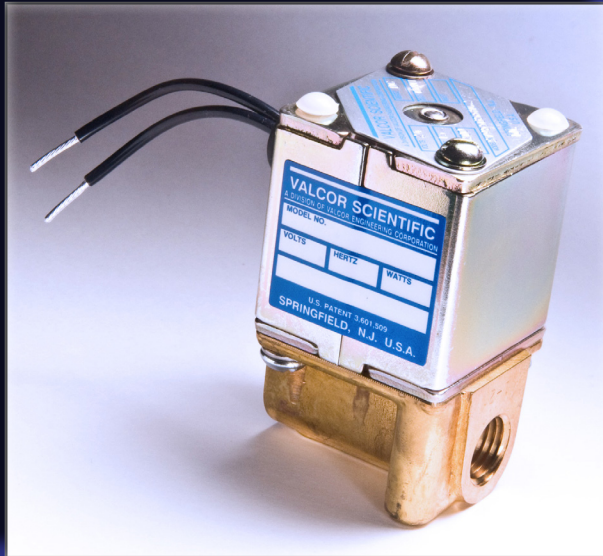


# SV95

## 2-Way Direct Acting Normally Closed Cryogenic Solenoid Valve



Valcor Engineering Corporation



### DESCRIPTION

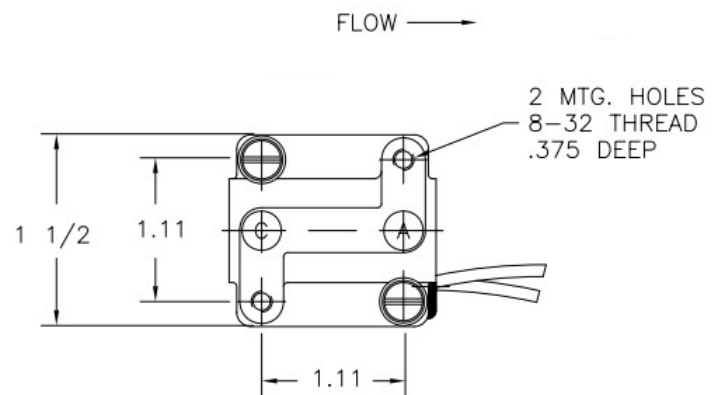
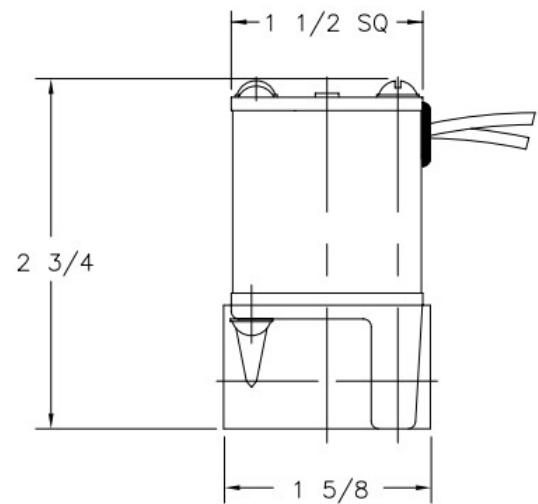
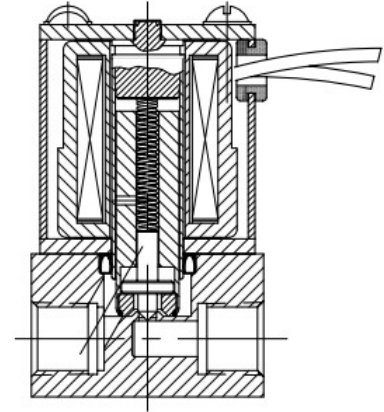
The SV95 series are direct acting 2-way normally closed poppet-style cryogenic solenoid valves designed to control the flow of cold and cryogenic gases and liquids. They feature Valcor's proprietary tapered PTFE poppet design which provides tight shut-off, long service life without leaking. PTFE rider rings around the plunger minimize friction to extend the operating life of the valves. These valves do not require system pressure to operate. The compact size and low weight allow these valves to be used in the tightest space available. Their low mass minimizes thermal loss as well.

### APPLICATION

The SV95 are particularly well suited for controlling cryogenic liquids such as LN<sub>2</sub> and LCO<sub>2</sub>. Examples include: environmental test chambers, gas and liquid chromatography, analytical and medical instruments and equipment, low temperature electronic component testing, beverage carbonation, and calibration and test stands.

### FEATURES

- Maximum Operating Pressure: 1000 PSIG
- Flow Rate: Body Cv of 0.35 to .71 available
- Leak rate: Internal: bubble tight on gas, drip tight on liquid. External: 0 cc/min at 1000 PSIG
- Temperature: -320° F to 150° F max standard
- 8.5 to 15 watts at 115/60 Hz or 10 to 15 watts @ 24 VDC 70° F; continuous duty
- Optional NEMA 4 molded coil with 18 mm DIN connector
- 1/4" NPT ports
- Two 8-32 mounting holes in bottom of body
- Mountable in any orientation
- Fully customizable for your application



Custom designs are our specialty. Contact us today to see how we can help on your next project.

Valcor Engineering Corporation  
2 Lawrence Road | Springfield, NJ 07081  
(973) 467-8400 | scientific@valcor.com  
www.valcor.com

# SV95

## 2-Way Direct Acting Normally Closed Cryogenic Solenoid Valve



Valcor Engineering Corporation

### Valve Parts in Contact with Fluid

Body	Brass
Seal Disc	PTFE
Body Seal	PTFE
Plunger Tube	303 SS
Plunger	430F SS
Plunger Stop	430 SS
Spring	303 SS
Rider Rings	PTFE

### Electrical

Standard Voltages	115/60 AC & 24 VDC. Consult factory for other voltages available.
Standard Coil Housing	General purpose with 18" pigtailed. General purpose with 1/2" conduit is also available. Consult factory. Replace "G" in part number with "C" for general purpose with 1/2" conduit. Example: SV95C60C6 for general purpose with 1/2" conduit solenoid.

### Specifications

Port Size (NPT)	Orifice Size (ins.)	Cv	Max. Pressure (PSI)	Model Number	Wattage		
			Liquid		115/60Hz	24/DC	Recommended Nozzle Orifice
<b>2-Way Normally Closed</b>							
1/8	1/8	0.35	150	SV95G32HC23	15		0.110"
1/8	1/8	0.35	150	SV95G56HC23		15	0.110"
1/4	3/64	0.06	1000	SV95G60C0	8.5		0.014"
1/4	3/64	0.06	1000	SV95G56HC0		10	0.014"
1/4	1/8	0.35	150	SV95G32HC3	15		0.110"
1/4	1/8	0.35	150	SV95G56HC3		15	0.110"
1/4	1/4	0.71	35	SV95G32HC6	15		0.220"
1/4	1/4	0.71	35	SV95G56HC6		15	0.220"