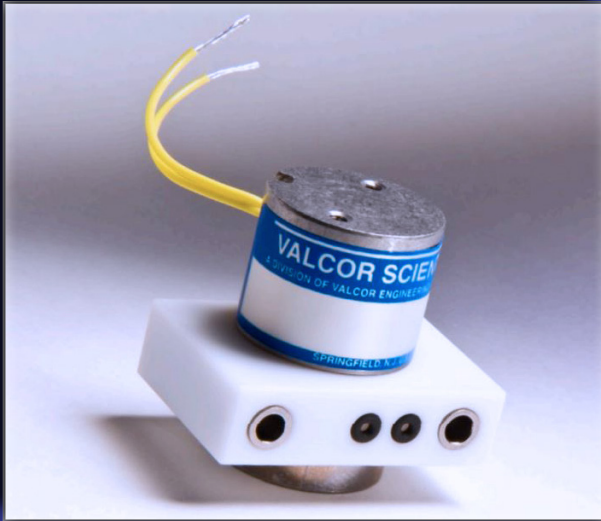


# SV74SM

## 2-Way Normally Closed Surface Mount Diaphragm Isolation Valve



Valcor Engineering Corporation



### DESCRIPTION

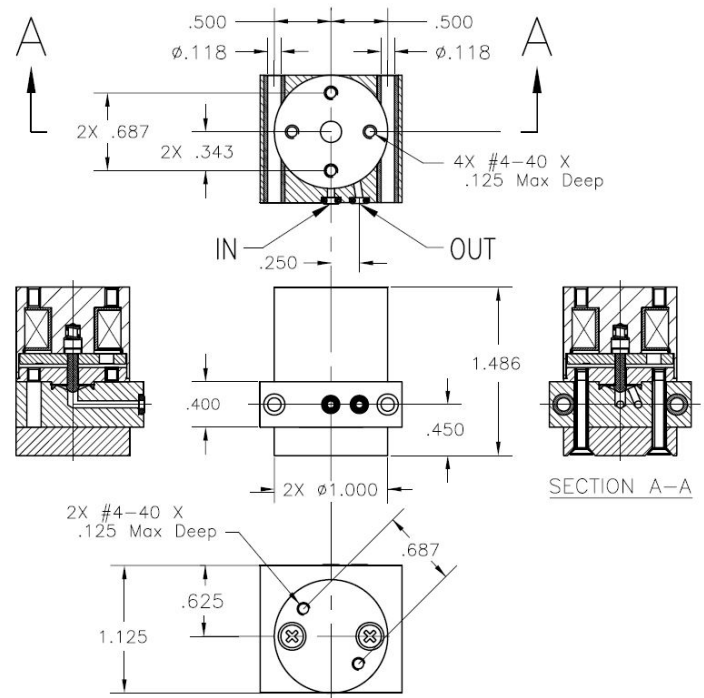
The SV74SM series 2-way normally closed miniature diaphragm isolation valves provide high purity isolation of the media from the valve mechanism by excluding all metal components from the fluid path. Only PTFE or PEEK are in contact with the media. This design enables these valves to handle extremely corrosive or high purity liquids and gases without breaking down or contaminating the purity of the media. These valves are direct acting, and do not require system pressure to operate. They can control pressure and vacuum. Their compact size, low weight and low power coils allow these valves to be used portable and benchtop instruments.

### APPLICATION

The SV74SM series are designed for analytical and medical instruments requiring the total isolation of the media from the valve mechanism. Low internal volume makes purging and sterilization between media batch changes fast and efficient. Applications include: blood analyzers and packaging equipment, analytical and medical instruments and equipment, clinical instruments, reagent and diluent dispensers, and printing inks, dyes, and colorants.

### FEATURES

- Low power consumption is ideal for portable battery powered instruments
- 30 PSIG max pressure, optional 100 PSIG available
- 28" Hg vacuum
- Low internal volume
- Bi-Directional Flow capability
- Low power 12 and 24 VDC coils rated for continuous duty
- Surface mounting eliminates fittings, makes maintenance easy
- Mountable in any orientation
- Fully customizable for your application



Custom designs are our specialty. Contact us today to see how we can help on your next project.

Valcor Engineering Corporation  
2 Lawrence Road | Springfield, NJ 07081  
(973) 467-8400 | scientific@valcor.com  
www.valcor.com

# SV74SM

## 2-Way Normally Closed Surface Mount Diaphragm Isolation Valve



Valcor Engineering Corporation

### Valve Parts in Contact With Fluid

Body	PTFE
Diaphragm	PTFE
Surface Seal	FKM

### Other Parts

Armature	430F SS
Spring	303 SS
Coil Housing	Nickel Plated Steel
Base Plate	Nickel Plated Steel

Body is also available in PEEK and PCTFE.  
Consult factory for availability of specific constructions.

### Specifications

Port Position	Orifice Size (in.)	Max. Operating Pressure		Model Number	Voltage	Wattage
		Gas & Liquid (PSI)	Vacuum (in. Hg)			
Left	0.062	30	28	SV74SMLP25T-1	12 VDC	1.5
Right	0.062	30	28	SV74SMRP25T-1	12 VDC	1.5
Left	0.062	30	28	SV74SMLP25T-2	24 VDC	1.5
Right	0.062	30	28	SV74SMRP25T-2	24 VDC	1.5

Alternate voltage of 6 VDC & 115V/60 HZ available upon request. Please consult factory for availability & part number.

High pressure version available up to 100 PSI (-HP). PEEK body only. Please consult factory for availability or specific constructions.  
Port position: Looking directly at the ports with the solenoid on top, "L" indicates outlet port is left of inlet port, and "R" indicates outlet port is right of inlet port.

For Temperature and Duty Cycle information, please consult "Temp and Duty Cycle" link under Technical Information on our website.