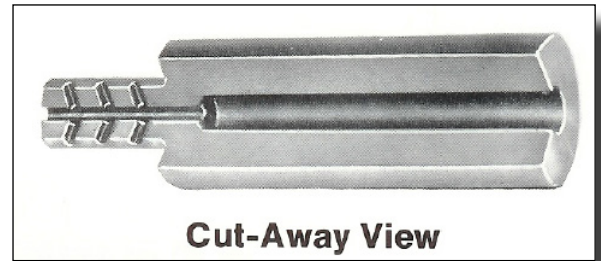
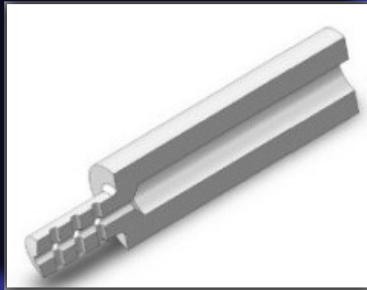


SV520-55-B400

Plug Resistant Orifice



Valcor Engineering Corporation



DESCRIPTION

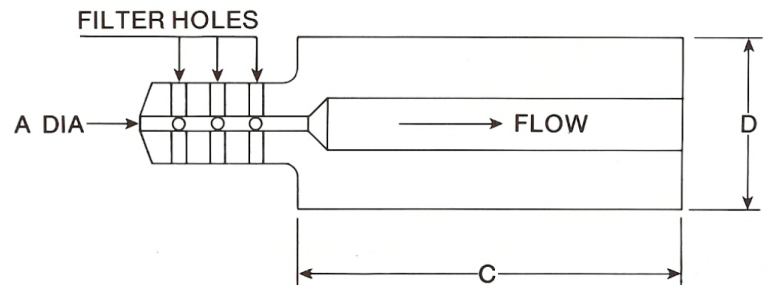
Valcor's SV520-55-B400 Plug Resistant Orifice (PRO) consists of only one part; a precision machined bar stock body. The plug portion of the body incorporates 12 precision holes forming a strainer around the orifice to trap particles that might otherwise plug it, eliminating the need for separate wire cloth strainers. The orientation of the holes also prevents a key cause of steam trap failure by eliminating the energy of flashing condensate through the impingement of opposing flow streams on each other, rather than on the seating surfaces found in traditional steam traps. The SV520-55-B400 is typically socket welded to flanges, pipe unions or couplings for installation in process piping systems.

APPLICATION

SV520-55-B400 Plug Resistant Orifice is designed to prevent inadvertent steam condensate induction into turbine cylinders by replacing traditional steam traps. They are also used downstream of pressure reducing regulators to prevent the seat erosion, noise and vibration associated with cavitation. The B400 PROs are also used as redundant backups to steam traps, providing continuing system protection if the steam trap needs maintenance or fails. The B400 PROs are also used in boiler blow down lines, unit heater and turbine drain systems as well as other high pressure steam supply and drain lines.

FEATURES

- Compact size and low weight save space and stress on process piping
- Simplifies process control systems by eliminating multiple components
- ASME-SA479, Type 316 Stainless Steel Body
- Porting: Socket Weld for 3/4", 1", 1 1/2", 2", 2 1/2", 3" or 4"
- 3675 PSIG at 1000°F or 2625 PSIG at 1050°F working temperature
- Customer specified orifice diameter
- Resistant to contamination and sludge buildup
- Prevents noise and vibration associated with control valve cavitation
- Usable in multi-stage pressure drop systems
- Mountable in any orientation
- Customer specified flow restricting orifice diameter



SIZE	C	D DIA
3/4	2.75	1.050
1	3.00	1.315
1 1/2	3.25	1.900
2	3.50	2.375
2 1/2	4.50	2.875
3	5.00	3.500
4	6	4.500

Custom designs are our specialty. Contact us today to see how we can help on your next project.

Valcor Engineering Corporation
2 Lawrence Road | Springfield, NJ 07081
(973) 467-8400 | scientific@valcor.com
www.valcor.com