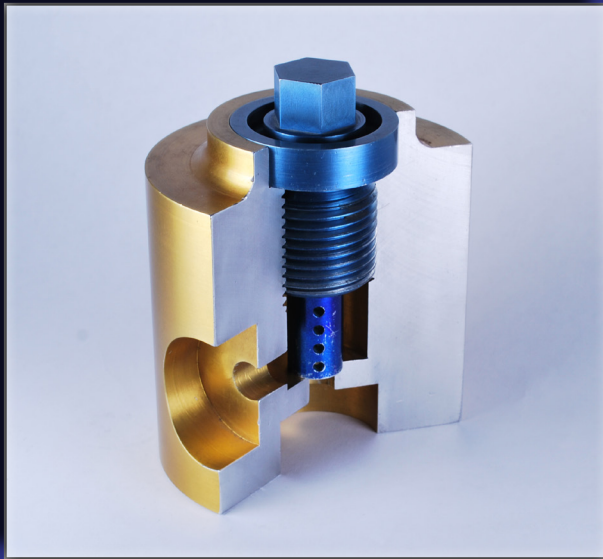


SV520-55-A100

Plug Resistant Orifice



Valcor Engineering Corporation



DESCRIPTION

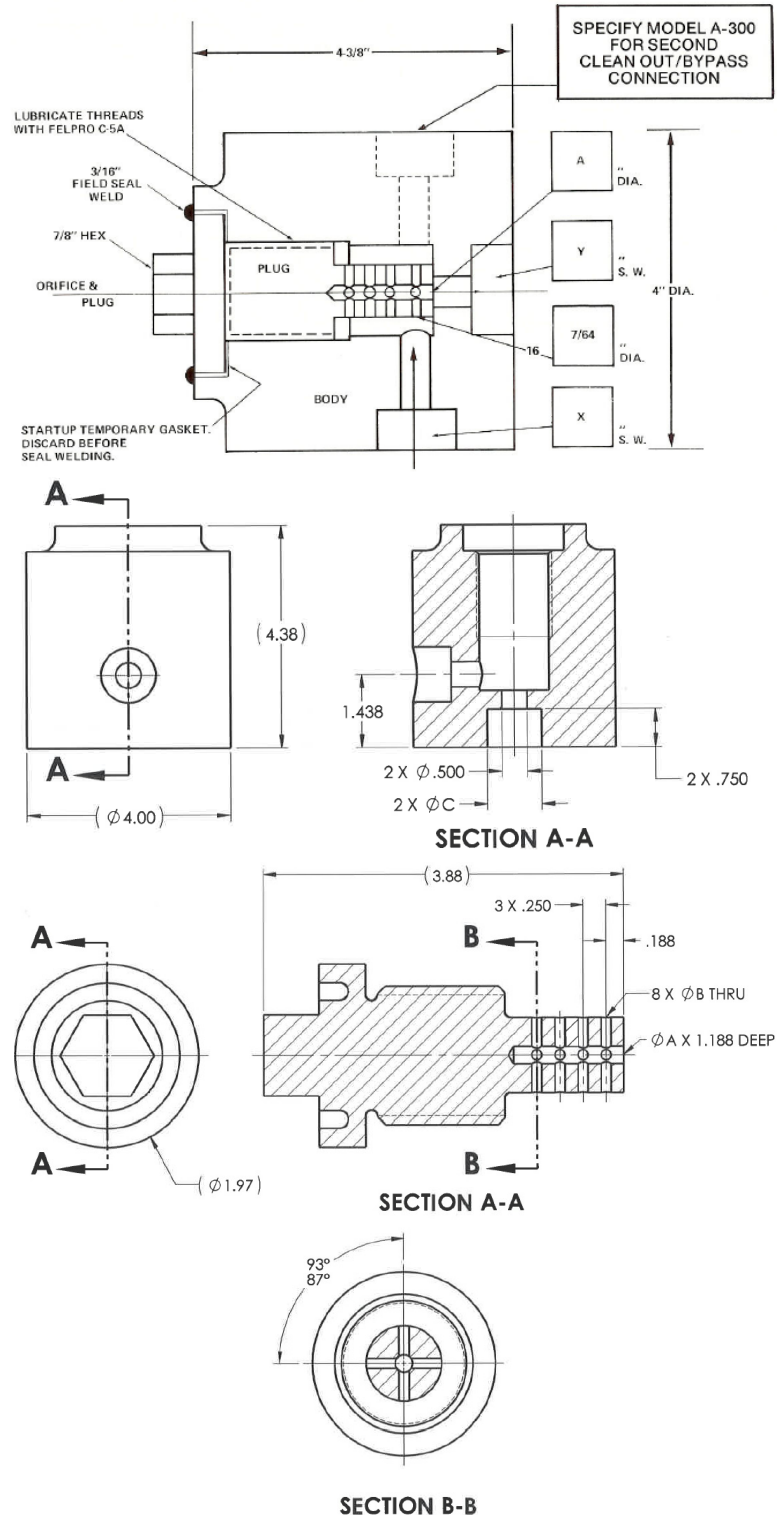
SV520-55-A100 Plug Resistant Orifice consists of only two parts; the plug and the body. The plug incorporates 16 precision holes forming a strainer around the orifice to trap particles that might otherwise plug it, eliminating the need for separate wire cloth strainers. The orientation of the holes prevents a key cause of steam trap failure by eliminating the energy of flashing condensate through the impingement of opposing flow streams on each other, rather than on the seating surfaces found in traditional steam traps. The plug can be removed from the body for inspection, cleaning or replacement without disturbing the process piping. The plug may be seal-welded to eliminate the potential for any external leakage.

APPLICATION

SV520-55-A100 is designed to prevent inadvertent steam condensate induction into turbine cylinders by replacing traditional steam traps. It is also used downstream of pressure reducing regulators to prevent the seat erosion and noise associated with cavitation. A100s are also used as redundant backups to steam traps, providing continuing system protection if the steam trap needs maintenance or fails. They are also used in gland seal drain systems and in other high pressure steam supply and drain lines.

FEATURES

- Compact size and low weight save space and stress on process piping
- Simplifies process control systems by eliminating multiple components
- Available with inline or right-angle process porting
- Customer specified orifice diameter
- Resistant to contamination and sludge buildup
- Mountable in any orientation



Custom designs are our specialty. Contact us today to see how we can help on your next project.

Valcor Engineering Corporation
2 Lawrence Road | Springfield, NJ 07081
(973) 467-8400 | scientific@valcor.com
www.valcor.com

SV520-55-A100

Plug Resistant Orifice



Valcor Engineering Corporation

Specifications

Valve	ASME Section III, Class 1, 2, and 3 compliant
Rating	3675 PSIG @ 1000°F or 2625 PSIG at 1050°F working temperature
Connection	Socket weld porting for 1/2", 3/4", 1", 1 1/4" or 1 1/2" piping
Material	ASME-SA479, Type 316 Stainless Steel Body ASME-SA479, Type 316 Stainless Steel Plug

Socket Weld Connection	ØC	Pipe Size
8	0.855-0.875	1/2
12	1.065-1.085	3/4
16	1.330-1.350	1
20	1.670-1.690	1-1/4
24	1.915-1.935	1-1/2

Flow Restricting Orifice Plug	ØA	ØB
1	1/16	0.059
2	3/32	0.093
3	1/8	7/64
4	3/16	7/64
5	1/4	7/64
6	5/16	7/64

Part Number Configurator

Series	Category	Model	Connection (Pipe Socket Weld)	Orifice (inches)
SV520	55	A100	8	1/2
			12	3/4
			16	1
			20	1 1/4
			24	1 1/2
			1	1/16
			2	3/32
			3	1/8
			4	3/16
			5	1/4
			6	5/16

Example: SV520-55-A100-16-3

Description: 1" Pipe Socket Weld End Connections, 1/8" Orifice Plug

Custom designs are our specialty. Contact us today to see how we can help on your next project.

Valcor Engineering Corporation
2 Lawrence Road | Springfield, NJ 07081
(973) 467-8400 | scientific@valcor.com
www.valcor.com