

# SV340 & SV440

2-Way Normally Closed and Normally Open High Flow Piston Solenoid Valves



Valcor Engineering Corporation



## DESCRIPTION

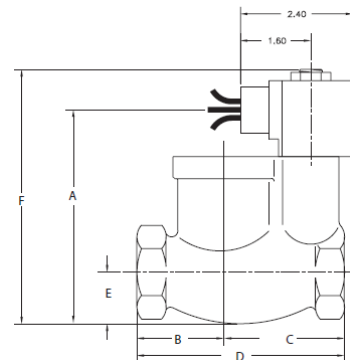
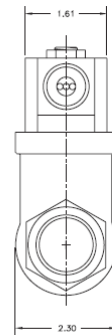
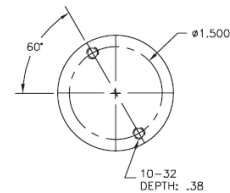
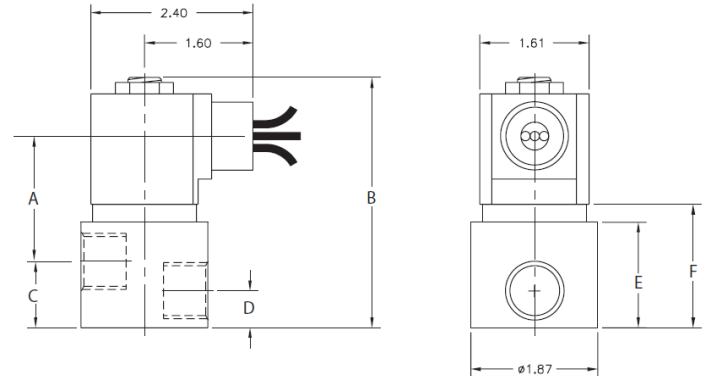
The SV340 SV440 series are pilot operated 2-way normally closed and normally open general purpose solenoid valves designed to operate with minimal operating pressure (MOP) and control the high flow of inert gases and liquids. The pilot operation enables these valves to control high flows with low power consumption in a compact envelope. They feature bar stock bodies for exceptional durability in typical industrial applications. The compact size and low weight allow these valves to be used in the tightest space available. They are available with UL and CSA listing upon request.

## APPLICATION

The SV340 SV440 series are suitable for a broad range of light industrial applications including: industrial pneumatic, fuel gas and hydraulic systems, potable and wastewater treatment plants, steam sterilizers, cleaners, food and beverage processing, high BTU burner combustion gas control, tank drains, air humidifiers, and hot water and steam in car/truck washes.

## FEATURES

- 300 PSIG MAWP
- Saturated steam to 150 PSIG
- MOP of 0-5 PSIG based on orifice size
- Flow Rate: Cv of 1.1 to 18.5 available
- Leak rate: Internal: bubble tight on gas, drip tight on liquid. External: 0 cc/min at 300 PSIG
- 10 watts at 115/60 Hz or 24 VDC 70°F; continuous duty
- NEMA 4 coil housing standard, NEMA 7 available
- Electrical connection: 24" pigtailed standard, 1/2" conduit hub available
- Brass or stainless steel bar stock body
- Two 10-32 UNF mounting holes in bottom of body
- Fully customizable for your application



Custom designs are our specialty. Contact us today to see how we can help on your next project.

Valcor Engineering Corporation  
2 Lawrence Road | Springfield, NJ 07081  
(973) 467-8400 | scientific@valcor.com  
www.valcor.com

# SV340 & SV440

2-Way Normally Closed and Normally Open High Flow Piston Solenoid Valves



Valcor Engineering Corporation

## Construction

Operating Mode	Normally Closed: Open when energized, closed when de-energized Normally Open: Closed when energized, open when de-energized
Port Size (in.)	Normally Closed: 1/4, 3/8, 1/2, 3/4, 1, 1 1/4 Normally Open: 1/4, 3/8, 1/2
Orifice Size (in.)	Normally Closed: 3/8, 3/4, 15/16, 1 1/8 Normally Open: 3/8
Temperature Ratings	Ambient Temp -40°F to 150°F max. with class F coil 175°F max. with Class H coil Fluid Temp. See specifications on next page.
Mounting Position	Solenoid vertical and upright only
Agency Listings	UL listed, CSA approved by order
Options	Manual override, mounting bracket

### Valve Parts in Contact With Fluid

Body	Brass, 303 stainless steel
Seals	PKM, Buna N, PTFE
Internal Metal Parts	303 and 430F stainless steel

## Electrical

Standard Voltages	AC 24V 60Hz AC 110V 50Hz, AC 120V 60Hz AC 220V 50Hz, AC 240V 60Hz DC 12V, DC 24V
Voltage Tolerance	+10% to -15% of applicable voltage
Standard Coil Housing	Standard: Watertight NEMA 4 Options: Conduit, grommet, DIN, explosion proof NEMA 7, open frame, junction box
Coil	Class F and H
Lead Length	24 inches

\*Consult the factory for specifications other than those listed above.

## Coil Data

Model		SV340	SV440
Frequency		60	60
Power	Inrush	46.2	46.2
VA	Holding	20.4	22.4
Power	AC	10	10
Consumption (W)	DC	Class F = 10, Class H = 9	

# SV340 & SV440

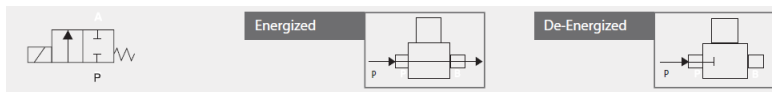
2-Way Normally Closed and Normally Open Pilot Operated Solenoid Valves



Valcor Engineering Corporation

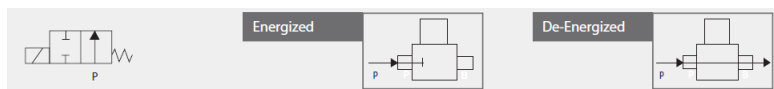
## Specifications for SV340 Normally Closed

Port Size (in.) (NPT)	Orifice Size (in.)	Cv	Minimum Operating Pressure (PSIG)	Max. Operating Pressure (PSIG)						Max Fluid Temp °F	Model Number	
				Air/Gas		#5 & #6 Heated Fuel Oil		Steam			Normally Closed	
				Water, AC	Lt. Oil DC	AC	DC	AC	DC		Brass	Stainless Steel
1/4	3/8	1.1	0	300	150	300	150	-	-	230	SV340GF02V9BF5	SV340GF02V1BF5
	3/8	1.1	0	-	-	-	-	150	150	366	SV340GH02S0BF5	SV340GH02S1BF5
3/8	3/8	1.5	0	300	150	300	150	-	-	230	SV340GF02V9CF5	SV340GF02V1CF5
	3/8	1.5	0	-	-	-	-	150	150	366	SV340GH02S0CF5	SV340GH02S1CF5
1/2	3/8	1.5	0	300	150	300	150	-	-	230	SV340GF02V9DF5	SV340GF02V1DF5
	3/8	1.5	0	-	-	-	-	150	150	366	SV340GH02S0DF5	SV340GH02S1DF5
	3/8	6.0	5	100	100	150	100	-	-	230	SV340GF02V5DG5	
3/4	3/8	7.2	5	100	100	150	100	-	-	230	SV340GF02V5EG5	
1	15/16	11.5	5	100	100	150	100	-	-	230	SV340GF02V5FG7	
1 1/4	1 1/4	18.5	5	100	100	150	100	-	-	230	SV340GF02V5GJ1	



## Specifications for SV440 Normally Open

Port Size (in.) (NPT)	Orifice Size (in.)	Cv	Minimum Operating Pressure (PSIG)	Max. Operating Pressure (PSIG)						Max Fluid Temp °F	Model Number	
				Air/Gas		#5 & #6 Heated Fuel Oil		Steam			Normally Closed	
				Water, AC	Lt. Oil DC	AC	DC	AC	DC		Brass	Stainless Steel
1/4	3/8	0.8	0	300	150	300	150	-	-	230	SV440GF02V9BF5	SV440GF02V1BF5
	3/8	0.8	0	-	-	-	-	150	150	366	SV440GH02S0BF5	SV440GH02V1BF5
3/8	3/8	1.0	0	300	150	300	150	-	-	230	SV440GF02V9CF5	SV440GF02V1CF5
	3/8	1.0	0	-	-	-	-	150	150	366	SV440GH02S0CF5	SV440GH02S1CF5
1/2	3/8	1.0	0	300	150	300	150	-	-	230	SV440GF02V9DF5	SV440GF02V1DF5
	3/8	1.0	0	-	-	-	-	150	150	366	SV440GH02S0DF5	SV440GH02S1DF5



# SV340 & SV440

2-Way Normally Closed and Normally Open Pilot Operated Solenoid Valves



Valcor Engineering Corporation

## Part Number Configurator

Example Part Number: SV340GF02V9B1F5B

S	V	3	4	0	G	F	0	2	V	1	B	F	5	B			
Numbers 1 thru 5		6	7	8-9		10	11	12	13-14		15						
Series	Operating Mode	Housing		Coil Insulation		Application Voltage		Seal Material		Body Code		Port Connection (NPT) (in.)		Orifice Size (in.)		Option	
SV340	Normally Closed	A	Conduit	F	Class F	02	120V/60Hz 110V/50Hz	V	FKM	9	Brass w/ SS Trim	B	1/4	F5	3/8	M	Manual Override
SV440	Normally Open	P	Open Frame	H	Class H	04	220V/60Hz 220V/50Hz	N	Buna N	0	Brass w/ SS Trim*	C	3/8	G5	3/4	K	Mounting Bracket
		B	Grommet	01		24V/60Hz	S	PTFE	1	SS	D	1/2	G7	15/16			
		X	Explosion Proof NEMA 7	15		12V DC	5	Cast Brass w/ SS Trim	E	3/7	J1	1 1/8					
		S	Junction Box	16		24V DC	F	1									
		G	Watertight NEMA 4						G	1 1/4							
Y	DIN																

## External Dimensions

Cast Brass Bodies									
Body Code	Port Connection (NPT) (in.)	A	B		C	D	E	F	Weight
			NC	NO					
9, 0, and 1	1/4	1.54	3.57	3.91	0.95	0.42	1.47	1.73	1.75
9, 0, and 1	3/8	1.54	3.57	3.91	0.95	0.42	1.47	1.73	1.75
9, 0, and 1	1/2	1.60	3.65	3.99	0.97	0.54	1.55	1.81	2.00

Cast Brass Bodies								
Body Code	Port Connection (NPT) (in.)	A	B	C	D	E	F	Weight
5	1/2	3.05	1.75	1.5	3.9	0.82	5.15	3.25
5	3/4	3.05	1.75	1.5	3.9	0.82	5.15	4.0
5	1	3.19	1.88	1.75	4.43	1.00	5.42	4.25
5	1 1/4	3.93	2.28	1.95	4.95	1.23	6.43	6.25

Custom designs are our specialty. Contact us today to see how we can help on your next project.

Valcor Engineering Corporation  
 2 Lawrence Road | Springfield, NJ 07081  
 (973) 467-8400 | scientific@valcor.com | www.valcor.com