

# V27700-180-W

2-Way Dual Coil Latching Pilot Solenoid Valve



Valcor Engineering Corporation



## DESCRIPTION

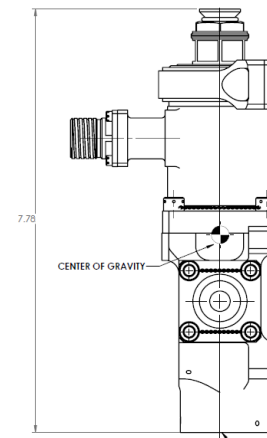
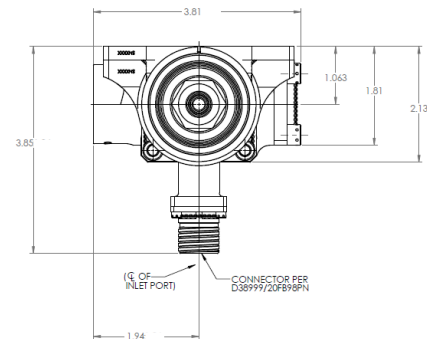
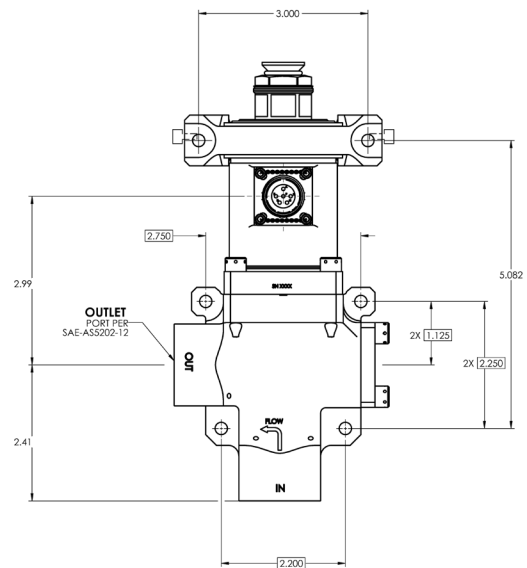
V27700-180-W valves are 2-way, dual coil, latching pilot operated, solenoid valves designed for use with non-corrosive, inert gases typically found on missile and launch vehicles. They are capable of operating in high vibration environments and sustain high shock loads. Pilot operation allows for higher pressure and flow capacity but with lower power consumption. The redundant dual coil design allows for continuous operation in the unlikely event that a single solenoid fails. The valves are latching and do not require continuous power to be held in the open or closed position. This design incorporates a robust mounting bracket around the solenoid, allowing it to handle high shock and vibration forces.

## APPLICATION

V27700-180-W valves can be used on spacecraft, launch vehicles, and missiles.

## FEATURES

- Maximum Operating Pressure: 300-4500 PSIG
- Flow Rate: 0.32" ESEO with  $C_d = 0.65$
- Leak Rate: Internal is 20 sccs. External is  $1 \times 10^{-3}$  sccs
- Temperature: -100°F to +130°F
- Current: 2 amps
- Wetted Materials: 302, 304, Inconel, Nitronic, PTFE, Fluorosilicone
- Inlet/Outlet ports per SAE-AS5202-12
- Weight: 10 lbs
- Capable of handling high vibration and shock loads
- Fully customizable for your application



Custom designs are our specialty. Contact us today to see how we can help on your next project.

Valcor Engineering Corporation  
2 Lawrence Road | Springfield, NJ 07081  
(973) 467-8400 | [aircraft@valcor.com](mailto:aircraft@valcor.com)  
[www.valcor.com](http://www.valcor.com)