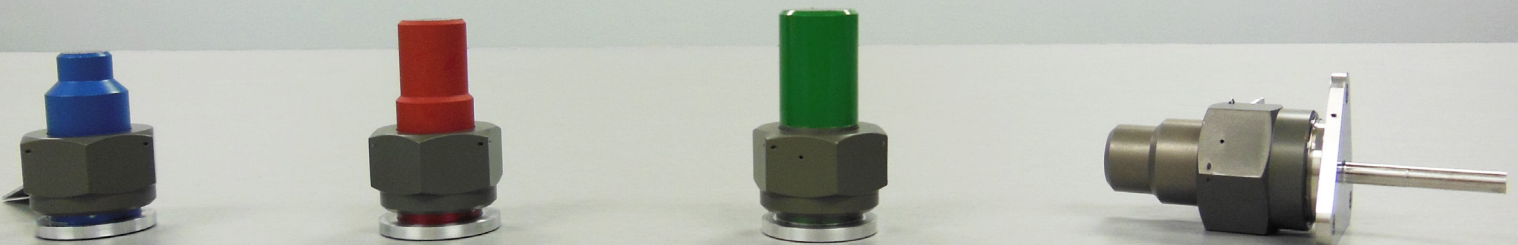


Fill & Drain (Service) Valves

Valcor Aerospace



DESCRIPTION

Valcor Fill & Drain (Service) Valves are metal-to-metal seat valves that maintain extremely low internal and external leakages (1×10^{-6} sccs GHe), yet are capable of very high operational cycles (over 100 open/close cycles). Our Fill & Drain Valves are compatible with liquids and propellants (Hydrazine, NTO, MMH, etc.), ammonia, and pressurants (GHe and GN₂). Options such as flange mounting, tube ends (for welding), color coded covers and bodies, and covers with lanyards are also available.

APPLICATION

These valves have applications in propellant and pressurant systems as part of the reaction control systems (RCS) and Attitude Control Systems (ACS), where high vibration, large temperature extremes and corrosive fluids are present. They are also found in aircraft pneumatic pressure vessels, hydraulic systems, and waveguide pressurization systems.

FEATURES

- Extensive material (body and seal) options
- Tight external leakage (1×10^{-6} sccs)
- Tight internal leakage (1×10^{-6} sccs)
- Triple redundant sealing
- Flange mounting or tube ends available
- High capacity and high pressure designs available



Valcor Aerospace Fill & Drain (Service) Valves

Brief Listing of Valcor's Qualified Aerospace Service Valves

Valcor Part No.	Inlet	Outlet	Body Material	Media	Operating Pressure
V24000-01-1-W	10-32 UNJF	Flange	Aluminum	GN2, GHe	1,050 psi
V24000-02-1-W	AS4395-G-02	Flange	Aluminum	GN2, GHe, MMH	1,050 psi
V24000-03-1-W	AS4395-G-03	Flange	Aluminum	GN2, GHe, NTO	1,050 psi
V24000-04-1-W	1/4-28 UNJF	0.1875" tube	Inconel 625	GN2, GHe	10,000 psi
V24000-10-W	1/4-28 UNJF	0.1875" tube	Inconel 625	GN2, GHe	10,000 psi
V24000-11-W	AS4395-G-02	0.437" tube	Aluminum	GN2, GHe, MMH	1,400 psi
V24000-12-W	AS4395-G-03	0.437" tube	Aluminum	GN2, GHe, NTO	1,400 psi
V24000-15-W	AS4395-G-03	0.25" tube	Titanium	GN2, GHe	4,600 psi
V24000-15-1-W	AS4395-G-03	0.25" tube	CRES 304L	GN2, GHe, NTO, MMH	4,300 psi
V24000-16-W	AS4395-G-03	0.25" tube	Titanium	GN2, GHe	4,600 psi
V24000-17-W	AS4395-G-04	0.25" tube	Titanium	GN2, GHe, MMH	315 psi
V24000-17-1-W	AS4395-G-04	0.25" tube	CRES 304L	GN2, GHe, MMH	300 psi
V24000-18-W	AS4395-G-04	0.375" tube	Titanium	GN2, GHe, MMH	315 psi
V24000-18-1-W	AS4395-G-06	0.375" tube	Titanium	GN2, GHe, Ammonia	428 psi
V24000-19-W	AS4395-G-05	0.25" tube	Titanium	GN2, GHe, NTO	315 psi
V24000-19-1-W	AS4395-G-05	0.25" tube	CRES 304L	GN2, GHe, NTO	300 psi
V24000-20-W	AS4395-G-05	0.375" tube	Titanium	GN2, GHe, NTO	315 psi
V24000-21-W	AS4395-G-03	0.25" tube	Titanium	GN2, GHe	428 psi
V24000-31-W	AS4395-G-03	0.25" tube	Titanium	GN2, GHe	4,500 psi
V24000-32-W	AS4395-G-04	0.25" tube	Titanium	GN2, GHe, MMH	360 psi
V24000-33-W	AS4395-G-05	0.25" tube	Titanium	GN2, GHe, NTO	360 psi
V24000-34-W	AS4395-G-04	0.25" tube	Titanium	GN2, GHe, NTO	300 psi
V24000-35-W	AS4395-G-02	AS4320-05	Incol 625	GN2, GHe	3,000 psi
V24000-36-W	AS4395-G-03	0.25" tube	Titanium	GN2, GHe, TEA, TEB	1,200 psi
V24000-38-W	AS4395-G-04	0.25" tube	Titanium	FC-72	360 psi
V24000-58-W	AS1098-G-08	0.50" tube	Titanium	GN2, GHe, MMH	900 psi
V24000-59-W	A1098-G-10	0.50" tube	Titanium	GN2, GHe, NTO	900 psi
V24000-60-W	AS4395-G-03	0.25" tube	Inconel 625	GN2, GHe	10,000 psi
V24000-60-1-W	AS4395-G-03	0.25" tube	Inconel 625	GN2, GHe	10,000 psi
V24000-62-W	AS4395-G-04	0.25" tube	Titanium	GN2, GHe, MMH	400 psi
V24000-62-1-W	AS4395-G-04	0.25" tube	Titanium	GN2, GHe, MMH	400 psi
V24000-63-W	AS4395-G-05	0.25" tube	Titanium	GN2, GHe, MMH	400 psi
V24000-63-1-W	AS4395-G-05	0.25" tube	Titanium	GN2, GHe, MMH	400 psi
V24000-63-2-W	AS4395-G-04	0.25" tube	CRES 316L	GN2, GHe, MMH	320 psi
V24000-64-W	AS4395-G-03	0.25" tube	CRES 316L	GN2, GHe	1,300 psi
V24000-67-W	AS4395-G-03	0.25" tube	Titanium	GN2, GHe, N2H4	4,700 psi
V24000-72-W	1/4-28 UNJF	0.1875" Tube	Inconel 625	GN2, GHe	10,000
V24000-73-W	AS4395-G-04	0.25" Tube	CRES 304L	GN2, GHe, MMH	300
V24000-74-W	AS4395-G-05	0.25" Tube	CRES 316L	GN2, GHe, N2H4	360
V24000-78-W	AS1098-G-08	0.50" Tube	Titanium	GN2, GHe, MMH	2,600
V24000-79-W	AS1098-G-10	0.50" Tube	Titanium	GN2, GHe, NTO	2,600
V24000-97-W	AS4395-G-03-LH	0.50" Tube	Inconel 718	GN2, GHe	4,800
V24000-98-W	AS4395-G-03	0.375" Tube	Inconel 718	GN2, GHe, RP-1	4,800
V24000-99-W	AS4395-G-06-LH	0.375" Tube	CRES 316L	GN2, GHe, RP-1	1,850
V24000-100-W	AS4395-G-06	0.75" Tube	CRES 316L	GN2, GHe, 90% H2O2	1,850
V24000-102-W	1/4-28 UNJF	0.1875" Tube	Inconel 625	GN2, GHe	10,000