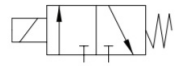


# SV75

3-Way Universal  
Diaphragm Isolation Valve



Valcor PTFE Instrumentation Series



## DESCRIPTION

The SV75 series valves utilize a PTFE diaphragm to seal on a PTFE seat. As a result, these valves are capable of handling a wide range of corrosive or high purity media by isolating all metallic components from the fluid path. Other materials, including PEEK & PCTFE are available as body material. Consult factory for availability.

## APPLICATION

The SV75 diaphragm isolation series is suitable for a broad range of applications such as the following:

- Ink Jet Printers
- Chromatography
- Clinical or Chemical Analyzer
- Laboratory Equipment

## FEATURES

- Diaphragm isolation construction for high purity process
- Handles corrosive and aggressive fluids
- Compact and low dead volume designs
- Low power consumption solenoids
- Universal pressure at any port construction
- Direct acting constructions
- Long life expectancy



# VALCOR SV75 SPECIFICATIONS

## Construction

### Valve Parts in Contact With Fluid

Body	PTFE
Diaphragm	PTFE

### Other Parts

Armature	430F SS
Spring	303 SS
Coil Housing	Nickel Plated Steel
Base Plate	Nickel Plated Steel

Body is also available in PEEK and PCTFE.

Consult factory for availability of specific constructions.

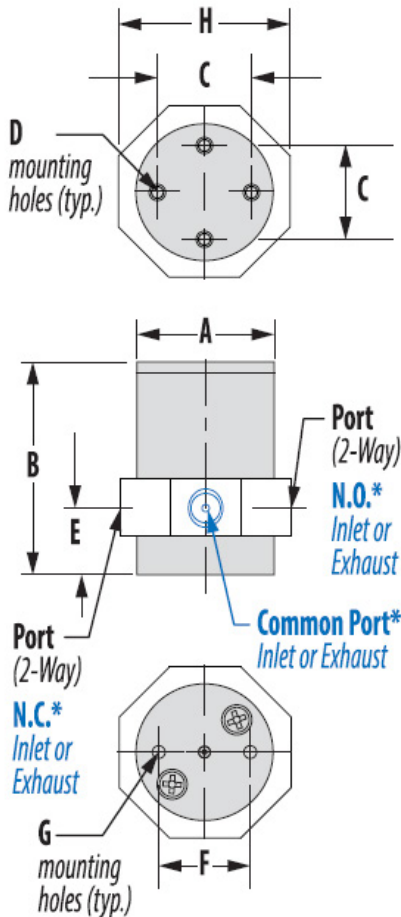
### Envelope Dimensions

Model Number (Round)	A (in.)	B (in.)	C	D	E	F	G	H
SV75P61T	0.75	1.161	0.5	#2-56	0.363	0.50	#2-56	N/A
SV75P25T	1.00	1.493	0.687	#4-40	0.45	0.687	#4-40	N/A
SV75P60T-R	1.25	1.78	0.884	#4-40	0.5	0.884	#4-40	N/A
SV75P48T-R	1.5	2.1	1.125	#4-40	0.562	1.125	#4-40	N/A

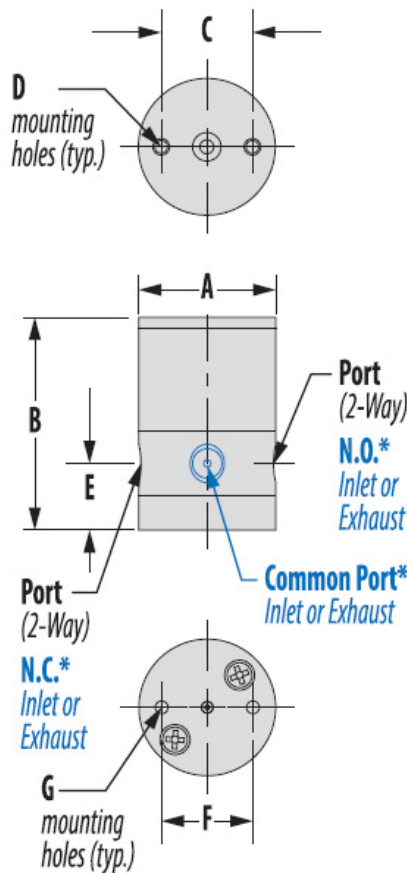
Model Number (Octagonal)	A (in.)	B (in.)	C	D	E	F	G	H
SV75P60T	1.25	1.814	0.884	#4-40	0.5	0.844	#4-40	1.5
SV75P48T	1.5	2.039	1.125	#4-40	0.562	1.125	#4-40	1.75

Octagonal Body



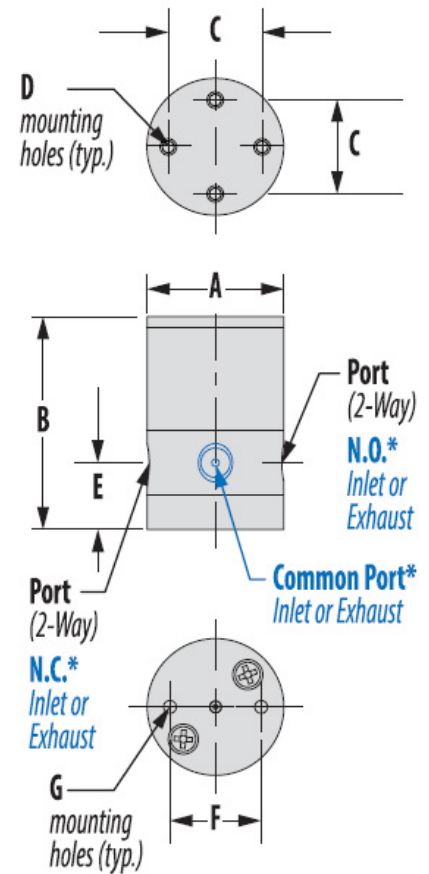
\*3-Way Only

Round Body  
SV75P61T



\*3-Way Only

Round Body  
SV75P25T, SV75P60T-R,  
SV75P48T-R



\*3-Way Only

## VALCOR SV75 SPECIFICATIONS

### Specifications

Port Size	Orifice Size (ins.)	Max. Pressure (PSI)		Model Number	Voltage	Wattage	Internal Volume (μl)
		Gas & Liquid	Vacuum (in. Hg)				
SV75 Universal 3-Way							
10-32	0.040"	30	28	SV75P61T-1	12 VDC	1.0	12
1/4-28	0.062"	30	28	SV75P25T-1	12 VDC	1.5	58
1/4-28	0.095"	30	28	SV75P60T-1**	12 VDC	4.2	121
1/8" NPS*	0.156"	30	28	SV75P48T-1**	12 VDC	7.2	399
10-32	0.040"	30	28	SV75P61T-2	24 VDC	1.0	12
1/4-28	0.062"	30	28	SV75P25T-2	24 VDC	1.5	58
1/4-28	0.095"	30	28	SV75P60T-2**	24 VDC	4.2	121
1/8" NPS*	0.156"	30	28	SV75P48T-2**	24 VDC	7.2	399

For temperature and duty cycle information, please consult "temp and duty cycle" link under Technical information on our website.

Alternate voltage of 6 VDC & 115V/60 HZ available upon request. Please consult factory for availability & part number.

High pressure version available up to 100 PSI ('-HP'). Please consult factory for availability of specific constructions.

\*1/8"-27 NPS (National Pipe Straight) thread. Flat bottom.

\*\*Suffix part number with '-R' for round body.