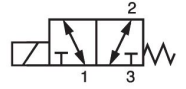
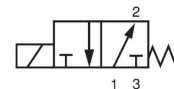
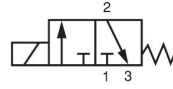


SV733, SV734, & SV736

3-Way Normally Closed, Normally Open and Universal
Direct Acting Solenoid Valves



Valcor General Purpose Series



DESCRIPTION

These compact 3-way direct acting solenoid valves are available in normally open, normally closed, and universal operating modes. They range from 1/8" to 1/4" port sizes with orifice sizes of 3/64" to 1/4". These sturdy construction valves are designed to handle a wide variety of fluids with an operating pressure range of 0 PSI up to 200 PSI. For special applications, please contact your Valcor customer service representative.

APPLICATION

The SV73 series is suitable for a broad range of industrial applications. Typical applications include:

- General 3-way control of water, oil, and gas
- Fluid and gas diverting and mixing
- Pneumatic and hydraulic cylinder actuation
- Calibration and test strands
- Pilot plant control loops
- Economical choice for OEM applications

FEATURES

- Direct acting construction designed for high cycle life
- Wide selection of construction materials allow for use on a variety of fluids
- AC and DC solenoid coils in a wide range of standard voltages
- NEMA4 as a standard coil enclosure, NEMA7 explosion proof and others available
- Pressure ratings up to 200 psi
- Fast 50 mS response time
- Mountable in any position



VALCOR SV733, SV734 & SV736 SPECIFICATIONS

Construction

Operating Mode	Normally Closed: Open when energized, closed when de-energized. Normally Open: Closed when energized, open when de-energized. Universal: Either normally open or normally closed with pressure at any port.
Port Size (in.)	1/8, 1/4
Orifice Size (in.)	3/64, 1/16, 3/32, 1/8, 3/16, 1/4
Temperature Ratings	Ambient Temp. -40°F to 150°F max, with class F coil 175°F max. with class H coil Fluid Temp: See Specifications on next page
Mounting Position	Mounts in any position (Best position is solenoid upright and vertical)
Agency Listings	UL listed, CSA approved by order

Valve Parts in Contact with Fluid

Body	Neon lamp, surge suppressor
Seals	FKM, Buna N, PTFE
Internal Metal Parts	303 and 430F stainless steel, copper

Electrical

Standard Voltages (AC and DC coils are interchangeable)	AC 24V 60Hz AC 110V 50Hz, AC 120V 60Hz AC 220V 50Hz, AC 240V 60Hz DC 12V, DC 24V
Voltage Tolerance	+10% to -15% of applicable voltage
Coil Housings	Standard: Watertight NEMA4 Options: Conduit, grommet, DIN, explosion proof NEMA7, open frame, junction box
Coil	Class H
Lead Length	24 inch or DIN 43650 FORM A

*Consult the factory for specifications other than those listed above.

Coil Data

Model		SV733	SV734	SV736
Frequency		60	50	60
Power (VA)	Inrush	46.2	46.2	46.2
	Holding	19.8	19.8	19.8
Power Consumption	AC	10	10	10
	DC	Class H = 10		

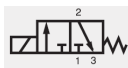
*Explosion proof models are rated at 11 watts.

VALCOR SV733, SV734 & SV736 SPECIFICATIONS

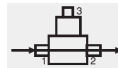
Specifications for SV733 Normally Closed

Port Size (in.) (NPT)	Orifice Size (in.)		Cv		Operating Pressure Differential				Max Fluid Temp °F	Model Number	
					Max. Pressure (PSI)					Normally Closed	
	Body	Top	Body	Top	Air/Gas		Water/Lt. Oil				SS Body Standard
					AC	DC	AC	DC			
1/8	3/64	1/16	0.05	0.10	0	200	200	200	200	230	SV733GF02V2AV1
	1/16	1/16	0.08	0.10	0	150	150	150	150	230	SV733GF02V2AC5
	3/32	3/32	0.18	0.23	0	100	100	100	100	230	SV733GF02V2AC9
	1/8	3/32	0.30	0.23	0	75	75	75	75	230	SV733GF02V2AV3
	3/16	3/32	0.53	0.23	0	30	30	30	30	230	SV733GF02V2AV9
1/4	3/64	1/16	0.05	0.10	0	200	200	200	200	230	SV733GF02V3BV1
	1/16	1/16	0.08	0.10	0	150	150	150	150	230	SV733GF02V3BC5
	3/32	3/32	0.18	0.23	0	100	100	100	100	230	SV733GF02V3BC9
	1/8	3/32	0.30	0.23	0	75	75	75	75	230	SV733GF02V3BV3
	3/16	3/32	0.53	0.23	0	30	30	30	30	230	SV733GF02V3BV9
	5/32	3/32	0.41	0.23	0	50	50	50	50	295	SV733GF02C3BV7
	5/32	3/32	0.41	0.23	0	50	50	50	50	180	SV733GF02N3BV7
	5/32	3/32	0.41	0.23	0	50	50	50	50	230	SV733GF02V3BV7
	5/32	3/32	0.41	0.23	0	50	50	50	50	366	SV733GF02T3BV7

Normally Closed



Energized



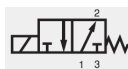
De-Energized



Specifications for SV734 Normally Open

Port Size (in.) (NPT)	Orifice Size (in.)		Cv		Operating Pressure Differential				Max Fluid Temp °F	Model Number	
					Max. Pressure (PSI)					Normally Open	
	Body	Top	Body	Top	Air/Gas		Water/Lt. Oil				SS Body Standard
					AC	DC	AC	DC			
1/8	1/8	3/32	0.36	0.20	0	75	25	75	25	230	SV734GF02V2AV3
1/4	1/8	3/32	0.36	0.20	0	75	25	75	25	230	SV734GF02V3AV3
1/4	5/32	3/32	0.41	0.23	0	75	20	75	20	295	SV734GF02C3BV7
1/4	5/32	3/32	0.41	0.23	0	75	20	75	20	180	SV734GF02N3BV7
1/4	5/32	3/32	0.41	0.23	0	75	20	75	20	230	SV734GF02V3BV7
1/4	5/32	3/32	0.41	0.23	0	75	20	75	20	366*	SV734GF02T3BV7

Normally Open



Energized



De-Energized



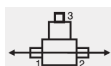
Specifications for SV736 Universal

Port Size (in.) (NPT)	Orifice Size (in.)		Cv		Operating Pressure Differential				Max Fluid Temp °F	Model Number	
					Max. Pressure (PSI)					Universal	
	Body	Top	Body	Top	Air/Gas		Water/Lt. Oil				SS Body Standard
					AC	DC	AC	DC			
1/8	3/64	1/16	0.05	0.08	0	150	120	150	120	230	SV736GF02V2AV1
	1/16	1/16	0.08	0.08	0	120	100	120	100	230	SV736GF02V2AC5
	3/32	3/32	0.18	0.19	0	75	25	75	25	230	SV736GF02V2AC9
	1/8	3/32	0.30	0.23	0	50	20	50	20	230	SV736GF02V2AV3
1/4	3/64	1/16	0.05	0.08	0	150	120	150	120	230	SV736GF02V3BV1
	1/16	1/16	0.08	0.08	0	120	100	120	100	230	SV736GF02V3BC5
	3/32	3/32	0.18	0.19	0	75	25	75	25	230	SV736GF02V3BC9
	1/8	3/32	0.30	0.23	0	50	20	50	20	230	SV736GF02V3AV3
	5/32	3/32	0.41	0.23	0	60	20	60	20	295	SV736GF02C3BV7
	5/32	3/32	0.41	0.23	0	60	20	60	20	180	SV736GF02N3BV7
	5/32	3/32	0.41	0.23	0	60	20	60	20	230	SV736GF02V3BV7
	5/32	3/32	0.41	0.23	0	50	50	50	50	366*	SV736GF02T3BV7

Universal



Energized



De-Energized



*Class H Coil Recommended for Steam and Other High Temperature Applications.

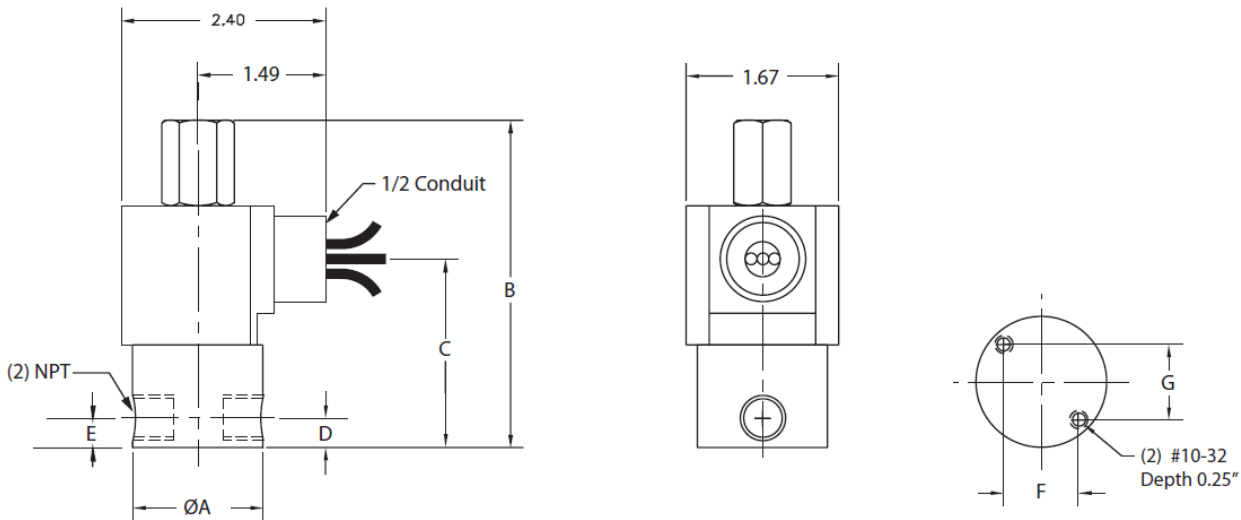
VALCOR SV733, SV734 & SV736 SPECIFICATIONS

Part Number Configurator

Example Part Number: **SV733GH02V2A V1**

S	V	7	3	3	G	F	0	2	V	2	A	V	1																								
Numbers 1 thru 5					6	7	8-9		10	11	12	13-14		15																							
Series	Operating Mode	Housing		Coil Insulation		Applicable Voltage		Seal Material		Body Code		Port Connection (NPT) (in.)		Orifice Size Body x Top (in.)		Option																					
SV733	Normally Closed	A	Conduit	F	Class F	02	120V/60Hz 110V/50Hz	N	Buna N	2	SS 1/8" NPT	A	1/8	V1	3/64x1/16	N	Neon Lamp with Surge Suppressor																				
		P	Open Frame															H	Class H	04	220V/60Hz 220V/50Hz	V	FKM	3	SS 1/4" NPT	B	1/4	C5	1/16x1/16								
		B	Grommet																											01	24V/60Hz	T	PTFE	8	Brass	V3	1/8x3/32
		X	Explosion Proof NEMA 7																																		
S	Junction Box	V9	3/16x3/32																																		
G	Water-tight NEMA 4			Z	Apply to housing with DIN (Y)																																
Y	DIN																																				
SV734	Normally Open																																				
SV736	Universal																																				

External Dimensions



Body Code	Port Conn. (in.)	A	B	C	D	E	F	G	Weight (lbs)
2	1/8	1.22	3.48	1.63	0.29	0.29	0.61	0.73	1.00
3	1/4	1.56	3.80	1.66	0.34	0.34	0.88	100	1.20
9	1/8	1.63	3.60	1.63	0.37	na	na	25	1.00
9	1/4	1.63	3.84	1.71	0.37	na	na	20	1.20