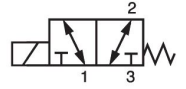
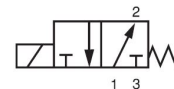
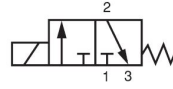


# SV733, SV734, & SV736

3-Way Normally Closed, Normally Open and Universal  
Direct Acting Solenoid Valves



Valcor General Purpose Series



## DESCRIPTION

These compact 3-way direct acting solenoid valves are available in normally open, normally closed, and universal operating modes. They range from 1/8" to 1/4" port sizes with orifice sizes of 3/64" to 1/4". These sturdy construction valves are designed to handle a wide variety of fluids with an operating pressure range of 0 PSI up to 200 PSI. For special applications, please contact your Valcor customer service representative.

## APPLICATION

The SV73 series is suitable for a broad range of industrial applications. Typical applications include:

- General 3-way control of water, oil, and gas
- Fluid and gas diverting and mixing
- Pneumatic and hydraulic cylinder actuation
- Calibration and test strands
- Pilot plant control loops
- Economical choice for OEM applications

## FEATURES

- Direct acting construction designed for high cycle life
- Wide selection of construction materials allow for use on a variety of fluids
- AC and DC solenoid coils in a wide range of standard voltages
- NEMA4 as a standard coil enclosure, NEMA7 explosion proof and others available
- Pressure ratings up to 200 psi
- Fast 50 mS response time
- Mountable in any position



## VALCOR SV733, SV734 & SV736 SPECIFICATIONS

### Construction

Operating Mode	Normally Closed: Open when energized, closed when de-energized. Normally Open: Closed when energized, open when de-energized. Universal: Either normally open or normally closed with pressure at any port.
Port Size (in.)	1/8, 1/4
Orifice Size (in.)	3/64, 1/16, 3/32, 1/8, 3/16, 1/4
Temperature Ratings	Ambient Temp. -40°F to 150°F max, with class F coil 175°F max. with class H coil Fluid Temp: See Specifications on next page
Mounting Position	Mounts in any position (Best position is solenoid upright and vertical)
Agency Listings	UL listed, CSA approved by order

### Valve Parts in Contact with Fluid

Body	Neon lamp, surge suppressor
Seals	Viton, Buna N, PTFE
Internal Metal Parts	303 and 430F stainless steel, copper

### Electrical

Standard Voltages (AC and DC coils are interchangeable)	AC 24V 60Hz AC 110V 50Hz, AC 120V 60Hz AC 220V 50Hz, AC 240V 60Hz DC 12V, DC 24V
Voltage Tolerance	+10% to -15% of applicable voltage
Coil Housings	Standard: Watertight NEMA4 Options: Conduit, grommet, DIN, explosion proof NEMA7, open frame, junction box
Coil	Class H
Lead Length	24 inch or DIN 43650 FORM A

\*Consult the factory for specifications other than those listed above.

### Coil Data

Model		SV733	SV734	SV736
Frequency		60	50	60
Power (VA)	Inrush	46.2	46.2	46.2
	Holding	19.8	19.8	19.8
Power Consumption	AC	10	10	10
	DC	Class H = 10		

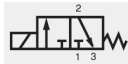
\*Explosion proof models are rated at 11 watts.

## VALCOR SV733, SV734 & SV736 SPECIFICATIONS

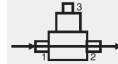
### Specifications for SV733 Normally Closed

Port Size (in.) (NPT)	Orifice Size (in.)		Cv		Operating Pressure Differential				Max Fluid Temp °F	Model Number	
					Max. Pressure (PSI)					Normally Closed	
	Body	Top	Body	Top	Air/Gas		Water/Lt. Oil				SS Body Standard
					AC	DC	AC	DC			
1/8	3/64	1/16	0.05	0.10	0	200	200	200	200	230	SV733GF02V2AV1
	1/16	1/16	0.08	0.10	0	150	150	150	150	230	SV733GF02V2AC5
	3/32	3/32	0.18	0.23	0	100	100	100	100	230	SV733GF02V2AC9
	1/8	3/32	0.30	0.23	0	75	75	75	75	230	SV733GF02V2AV3
	3/16	3/32	0.53	0.23	0	30	30	30	30	230	SV733GF02V2AV9
1/4	3/64	1/16	0.05	0.10	0	200	200	200	200	230	SV733GF02V3BV1
	1/16	1/16	0.08	0.10	0	150	150	150	150	230	SV733GF02V3BC5
	3/32	3/32	0.18	0.23	0	100	100	100	100	230	SV733GF02V3BC9
	1/8	3/32	0.30	0.23	0	75	75	75	75	230	SV733GF02V3BV3
	3/16	3/32	0.53	0.23	0	30	30	30	30	230	SV733GF02V3BV9
	5/32	3/32	0.41	0.23	0	50	50	50	50	295	SV733GF02C3BV7
	5/32	3/32	0.41	0.23	0	50	50	50	50	180	SV733GF02N3BV7
	5/32	3/32	0.41	0.23	0	50	50	50	50	230	SV733GF02V3BV7
	5/32	3/32	0.41	0.23	0	50	50	50	50	366	SV733GF02T3BV7

Normally Closed



Energized



De-Energized



### Specifications for SV734 Normally Open

Port Size (in.) (NPT)	Orifice Size (in.)		Cv		Operating Pressure Differential				Max Fluid Temp °F	Model Number	
					Max. Pressure (PSI)					Normally Open	
	Body	Top	Body	Top	Air/Gas		Water/Lt. Oil				SS Body Standard
					AC	DC	AC	DC			
1/8	1/8	3/32	0.36	0.20	0	75	25	75	25	230	SV734GF02V2AV3
1/4	1/8	3/32	0.36	0.20	0	75	25	75	25	230	SV734GF02V3AV3
1/4	5/32	3/32	0.41	0.23	0	75	20	75	20	295	SV734GF02C3BV7
1/4	5/32	3/32	0.41	0.23	0	75	20	75	20	180	SV734GF02N3BV7
1/4	5/32	3/32	0.41	0.23	0	75	20	75	20	230	SV734GF02V3BV7
1/4	5/32	3/32	0.41	0.23	0	75	20	75	20	366*	SV734GF02T3BV7

Normally Open



Energized



De-Energized



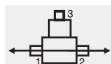
### Specifications for SV736 Universal

Port Size (in.) (NPT)	Orifice Size (in.)		Cv		Operating Pressure Differential				Max Fluid Temp °F	Model Number	
					Max. Pressure (PSI)					Universal	
	Body	Top	Body	Top	Air/Gas		Water/Lt. Oil				SS Body Standard
					AC	DC	AC	DC			
1/8	3/64	1/16	0.05	0.08	0	150	120	150	120	230	SV736GF02V2AV1
	1/16	1/16	0.08	0.08	0	120	100	120	100	230	SV736GF02V2AC5
	3/32	3/32	0.18	0.19	0	75	25	75	25	230	SV736GF02V2AC9
	1/8	3/32	0.30	0.23	0	50	20	50	20	230	SV736GF02V2AV3
1/4	3/64	1/16	0.05	0.08	0	150	120	150	120	230	SV736GF02V3BV1
	1/16	1/16	0.08	0.08	0	120	100	120	100	230	SV736GF02V3BC5
	3/32	3/32	0.18	0.19	0	75	25	75	25	230	SV736GF02V3BC9
	1/8	3/32	0.30	0.23	0	50	20	50	20	230	SV736GF02V3AV3
	5/32	3/32	0.41	0.23	0	60	20	60	20	295	SV736GF02C3BV7
	5/32	3/32	0.41	0.23	0	60	20	60	20	180	SV736GF02N3BV7
	5/32	3/32	0.41	0.23	0	60	20	60	20	230	SV736GF02V3BV7
	5/32	3/32	0.41	0.23	0	50	50	50	50	366*	SV736GF02T3BV7

Universal



Energized



De-Energized



\*Class H Coil Recommended for Steam and Other High Temperature Applications.

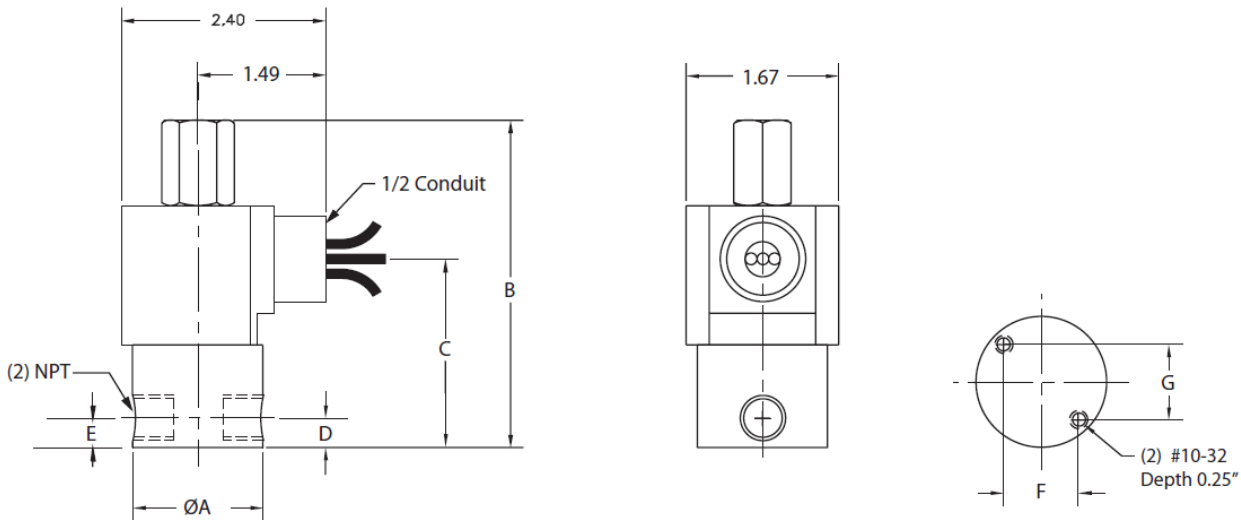
# VALCOR SV733, SV734 & SV736 SPECIFICATIONS

## Part Number Configurator

Example Part Number: SV733GH02V2A V1

S	V	7	3	3	G	F	0	2	V	2	A	V	1				
Numbers 1 thru 5					6	7	8-9		10	11	12	13-14		15			
Series	Operating Mode	Housing		Coil Insulation		Applicable Voltage		Seal Material		Body Code		Port Connection (NPT) (in.)		Orifice Size Body x Top (in.)		Option	
SV733	Normally Closed	A	Conduit	F	Class F	02	120V/60Hz	N	Buna N	2	SS	A	1/8	V1	3/64x1/16	N	Neon Lamp with Surge Suppressor
		P	Open Frame	H	Class H	04	110V/50Hz	V	Viton	3	1/8" NPT	B	1/4	C5	1/16x1/16		
		B	Grommet				220V/60Hz				SS			C9	3/32x3/32		
		X	Explosion Proof NEMA 7			01	220V/50Hz	T	PTFE	8	1/4" NPT			V3	1/8x3/32		
SV734	Normally Open	S	Junction Box			15	24V/60Hz						V7	5/32x3/32	Z	Surge Suppressor	
SV736	Universal	G	Water-tight NEMA 4			16	24V DC						V9	3/16x3/32			N
		Y	DIN														

## External Dimensions



Body Code	Port Conn. (in.)	A	B	C	D	E	F	G	Weight (lbs)
2	1/8	1.22	3.48	1.63	0.29	0.29	0.61	0.73	1.00
3	1/4	1.56	3.80	1.66	0.34	0.34	0.88	100	1.20
9	1/8	1.63	3.60	1.63	0.37	na	na	25	1.00
9	1/4	1.63	3.84	1.71	0.37	na	na	20	1.20