

SV327 & SV427

2-Way Zero Differential Normally Closed and Normally Open
Pilot Operated Solenoid Valves



Valcor General Purpose Series



DESCRIPTION

These 2-way piloted piston operated solenoid valves are capable of operating at zero differential pressure. Available in normally closed and normally open operating modes, they range from 1" to 2" port sizes with orifice sizes of 1" to 1 1/4", and pressures from 0 to 125 psi. Available in both brass and stainless steel constructions with optional seal materials, these high flow valves are designed to handle a wide ranges of gases and fluids. For special applications, contact your Valcor representative.

APPLICATION

The SV327 & SV427 series are suitable for a broad range of industrial applications. Typical applications include:

- Differential pressures down to zero psi
- Tank drain valves
- General on-off control of water, oil, and gas
- Process control and production piping
- Gas and liquid distribution systems
- Economical choice for OEM applications.

FEATURES

- Zero differential pilot operated construction
- Wide selection of construction materials allow for use on a variety of fluids
- AC and DC solenoid coils in a wide range of standard voltages
- Conduit as standard coil enclosure, NEMA4 as an option
- Pressure rating up to 125 psi
- Cv rating of up to 28



SV327 & SV427 SPECIFICATIONS

Construction

Operating Mode	Normally Closed: Open when energized, closed when de-energized Normally Open: Closed when energized, open when de-energized
Port Size (in.)	1, 1 1/4, 1 1/2, 2
Orifice Size (in.)	1, 1 1/4
Temperature Ratings	Ambient Temp -40°F to 150°F max. with class F coil 175°F max. with class H coil Fluid Temp. See specifications on next page.
Mounting Position	Solenoid vertical and upright
Agency Listings	Consult factory
Options	Manual override, neon lamp, surge suppressor

Valve Parts in Contact With Fluid

Body	Forged brass, 304 stainless steel, bronze
Seals	Viton, Buna N, ethylene propylene
Internal Metal Parts	303 and 430F stainless steel

Electrical

Standard Voltages	AC 24V 60Hz AC 110V 50Hz, AC 120V 60Hz AC 220V 50Hz, AC 240V 60Hz DC 12V, DC 24V
Voltage Tolerance	+10% to -15% of applicable voltage
Standard Coil Housing	Standard: Conduit (NEMA1) Options: Watertight NEMA4 terminal
Coil	Class F and H
Lead Length	18 inches

*Consult the factory for specifications other than those listed above.

Coil Data

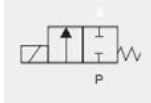
Model		SV327		SV427	
Frequency (Hz)		50	60	50	60
Power (VA)	Inrush	150	130	160	130
	Holding	27	22	28	22
Power Consumption	AC	17.5		18.5	
	DC	22.5		---	

Note: AC power consumption at 110V/50HZ, 120V/60HZ data

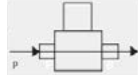
SV327 & SV427 SPECIFICATIONS

Specifications for SV327 Normally Closed

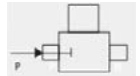
Normally Closed



Energized



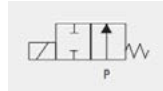
De-Energized



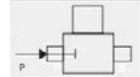
Port Size	Orifice Size (ins.)	C _v	Min PSI	Operating Pressure Differential								Max Fluid Temp °F	Model Number	
				Max Pressure (PSI)									Normally Closed	
				Air/Gas		Water		Lt. Oil		Steam			Brass	Stainless Steel
AC	DC	AC	DC	AC	DC	AC	DC	AC						
1	1	13	0	125	125	100	100	70	70	-	180	SV327AF02N5FG9	SV327AF02L7FG9	
	1	13	0	-	-	100	50	-	-	-	210	SV327AF02C5FG9	SV327AF02E7FG9	
1 1/4	1 1/4	19	0	125	125	50	50	70	70	-	180	SV327AF02N5GJ2	SV327AF02L7GJ2	
	1 1/4	19	0	-	-	50	50	-	-	-	210	SV327AF02C5GJ2	SV327AF02E7GJ2	
1 1/2	1 1/4	25	0	125	125	50	50	70	70	-	180	SV327AF02N5HJ2	SV327AF02L7HJ2	
	1 1/4	25	0	-	-	50	50	-	-	-	210	SV327AF02C5HJ2	SV327AF02E7HJ2	
2	1 1/4	28	0	125	125	50	50	70	70	-	180	SV327AF02N5JJ2	---	
	1 1/4	28	0	-	-	50	50	-	-	-	210	SV327AF02C5JJ2	---	

Specifications for SV427 Normally Open

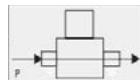
Normally Open



Energized



De-Energized



Port Size	Orifice Size (ins.)	C _v	Min PSI	Operating Pressure Differential								Max Fluid Temp °F	Model Number	
				Max Pressure (PSI)									Normally Closed	
				Air/Gas		Water		Lt. Oil		Steam			Brass	Stainless Steel
AC	DC	AC	DC	AC	DC	AC	DC	AC						
1	1	13	0	125	-	125	-	70	-	-	180	SV427AF02N5FG9	SV427AF02L7FG9	
	1	13	0	-	-	100	-	-	-	-	210	SV427AF02C5FG9	SV427AF02E7FG9	
1 1/4	1	13	0	-	-	-	-	-	-	50	295	SV427AH02C5GJ9	SV427AH02E7FG9	
	1 1/4	18	0	125	-	125	-	70	-	-	180	SV427AF02N5GJ2	SV427AF02L7GJ2	
	1 1/4	18	0	-	-	100	-	-	-	-	210	SV427AF02C5GJ2	SV427AF02E7GJ2	
1 1/2	1 1/4	18	0	-	-	-	-	-	-	50	295	SV427AH02C5GJ2	SV427AH02E7GJ2	
	1 1/4	23	0	125	-	125	-	70	-	-	180	SV427AF02N5HJ2	SV427AF02L7HJ2	
	1 1/4	23	0	-	-	100	-	-	-	-	210	SV427AF02C5HJ2	SV427AF02E7HJ2	
2	1 1/4	23	0	-	-	-	-	-	-	50	295	SV427AH02C5HJ2	SV427AH02E7HJ2	
	1 1/4	27	0	125	-	125	-	70	-	-	180	SV427AF02N5JJ2	---	
	1 1/4	27	0	-	-	100	-	-	-	-	210	SV427AF02C5JJ2	---	
	1 1/4	27	0	-	-	-	-	-	-	50	295	SV427AH02C5JJ2	---	

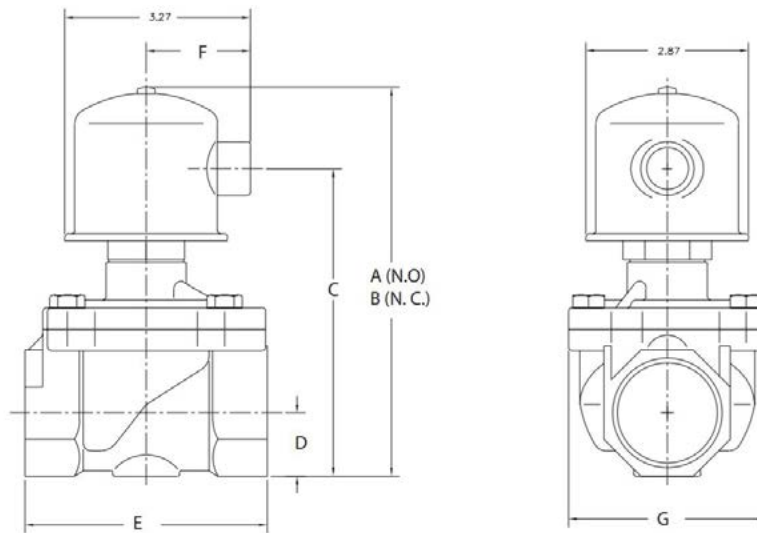
SV327 & SV427 SPECIFICATIONS

Part Number Configurator

Example Part Number: SV321GH02N5CG4

S	V	3	2	7	A	F	0	2	N	5	F	G	9		
Numbers 1 thru 5					6	7	8-9		10-11		12-13-14			15	
Series	Operating Mode	Housing		Coil Insulation		Applicable Voltage		Material (Seal, Body)		Pipe Connection NPT (in.) Orifice			Option		
SV327	Normally Closed	A	Conduit	F	Class F	02	120V/60Hz	N5	Buna N, Brass	FG9	1 (1)	M	Manual Override		
		W	Watertight NEMA 4	H	Class H	04	110V/50Hz							V5	Viton, Brass
						01	220V/60Hz 220V/50Hz 24V/60Hz	J7	Buna N, 316 SS	HJ2	1 1/2 (1 1/4)				
SV427	Normally Open					15	12V DC	C5	EPR, Brass	JJ2	2 (1 1/4)	N	Neon Lamp		
						16	24V DC	L7	Viton, 316SS					Z	Surge Supressor
								E7	Ethylene Propylene, 316 SS						

External Dimensions



Port Connection NPT (in.)	A	B	C	D	E	F	G	Weight (lbs)
1	7.3	6.61	4.78	0.84	3.7	1.83	3.22	5.1
1 1/4	7.99	7.3	5.47	1.08	4.35	1.83	3.7	6.7
1 1/2	7.99	7.3	5.47	1.08	4.35	1.83	3.7	6.7
2	8.59	7.9	6.07	1.47	5.58	1.83	3.68	9.1