

SV330 & SV430

2-Way Normally Closed and Normally Open
Direct Acting Solenoid Valves



Valcor General Purpose Series



DESCRIPTION

These compact, 2-way direct acting solenoid valves are available in normally closed and normally open operating modes. They range from 1/8" to 3/8" NPT. These robust valves feature barstock bodies, and are designed to handle a wide range of fluids with an operating pressure range of 0 PSI up to 2400 PSI. For special applications, please contact your Valcor customer service representative.

APPLICATION

The SV330 & SV430 series are suitable for a broad range of industrial applications.

Typical applications include:

- General on-off control of water, oil, and gas
- Gas and liquid distribution systems
- Process control and production piping
- Calibration and test stands
- Pilot plant control loops
- Economical choice for OEM applications.

FEATURES

- Direct acting construction designed for high cycles and long life
- Wide selection of construction materials allow for use on a variety of fluids
- AC and DC solenoid coils in a wide range of standard voltages
- NEMA 4 as standard coil enclosure, NEMA 7 Explosion proof and others available
- Mountable in any position



SV330 & SV430 SPECIFICATIONS

Construction

Operating Mode	Normally Closed: Open when energized, closed when de-energized Normally Open: Closed when energized, open when de-energized
Port Size (in.)	1/8, 1/4, 3/8
Orifice Size (in.)	3/64 to 3/8
Temperature Ratings	Ambient Temp 32°F to 125°F max. with class F coil 175°F max. with class H coil Fluid Temp. See specifications on next page.
Mounting Position	Mounts in any position (Best position is solenoid upright and vertical)
Agency Listings	UL listed, UL safety, UL recognized, CSA approved by order
Options	Manual override, mounting bracket

Valve Parts in Contact With Fluid

Body	Brass, 303 stainless steel
Seals	FKM, Buna N, PTFE, ethylene propylene, PTFE
Internal Metal Parts	303 and 430F stainless steel, copper or silver (AC valves only)

Electrical

Standard Voltages	AC 24V 60Hz / 24V 50Hz AC 110V 50Hz, AC 120V 60Hz AC 220V 50Hz, AC 240V 60Hz DC 12V, DC 24V
Voltage Tolerance	+10% to -15% of applicable voltage
Standard Coil Housing	Standard: Watertight NEMA 4 Options: Conduit, grommet, DIN, explosion proof NEMA 7, open frame, junction box
Coil	Class F and H
Lead Length	24 inches

*Consult the factory for specifications other than those listed above.

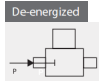
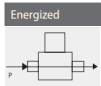
Coil Data

Model		SV330		SV430	
Frequency		50	60	50	60
Power (VA)	Inrush	37	30	43	37
	Holding	18	13	23	16
Power Consumption (W)	AC	10		11	
	DC	10			

SV330 & SV430 SPECIFICATIONS

Specifications for SV330 Normally Closed

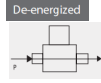
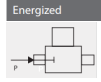
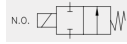
Normally Closed



Port Size	Orifice Size (ins.)	C _v	Min PSI	Operating Pressure Differential				Max Fluid Temp °F	Model Number	
				Max Pressure (PSI)					Normally Closed	
				Gas, Liquid		Steam			Brass	303 SS
AC	DC	AC	DC							
1/8	1/32	0.03	0	2400	2400	150	150	366	SV330GF02N8AC1	SV330GF02V2AC1
	3/64	0.05	0	1050	1000	150	150	366	SV330GF02N8AC3	SV330GF02V2AC3
	1/16	0.10	0	700	300	150	150	366	SV330GF02N8AC5	SV330GF02V2AC5
	5/64	0.15	0	500	240	150	150	366	SV330GF02N8AC7	SV330GF02V2AC7
	3/32	0.21	0	400	200	150	150	366	SV330GF02N8AC9	SV330GF02V2AC9
	7/64	0.29	0	350	170	150	150	366	SV330GF02N8AD3	SV330GF02V2AD3
	1/8	0.36	0	200	140	150	140	366	SV330GH02N8AD5	SV330GF02V2AD5
	5/32	0.44	0	150	100	150	100	366	SV330GF02N8AD7	SV330GF02V2AD7
	3/16	0.65	0	100	70	100	70	366	SV330GF02N8AE1	SV330GF02V2AE1
	1/14	0.85	0	50	20	50	20	366	SV330GF02N8AE7	SV330GF02V2AE7
1/4	9/32	1.0	0	35	15	35	15	366	SV330GF02N8AF1	SV330GF02V2AF1
	1/32	0.03	0	2400	2400	-	-	180	SV330GF02N8BC1	SV330GF02V3BC1
	3/64	0.05	0	1050	1000	-	-	180	SV330GF02N8BC3	SV330GF02V3BC3
	1/16	0.10	0	700	300	-	-	180	SV330GF02N8BC5	SV330GF02V3BC5
	5/64	0.15	0	500	240	-	-	180	SV330GF02N8BC7	SV330GF02V3BC7
	3/32	0.21	0	400	200	-	-	180	SV330GF02N8BC9	SV330GF02V3BC9
	7/64	0.29	0	350	170	-	-	180	SV330GF02N8BD3	SV330GF02V3BD3
	1/8	0.36	0	200	140	-	-	180	SV330GF02N8BD5	SV330GF02V3BD5
	5/32	0.44	0	150	100	-	-	180	SV330GF02N8BD7	SV330GF02V3BD7
	3/16	0.65	0	100	70	-	-	180	SV330GF02N8BE1	SV330GF02V3BE1
3/8	3/16	0.65	0	-	-	100	70	298	SV330GH02T8BE1	SV330GF02N3BE1
	1/4	0.85	0	50	20	-	-	180	---	SV330GF02V3BE7
	9/32	1.0	0	35	15	-	-	180	---	SV330GF02V3BF1
	1/8	0.36	0	200	140	-	-	200	SV330GF02N9CD5	SV330GF02V3CD5
	3/16	0.65	0	100	70	-	-	200	SV330GF02N9CE1	SV330GF02V3CE1
	9/32	1.00	0	35	15	-	-	200	SV330GF02N9CF1	SV330GF02V3CF1
	3/8	1.70	0	20	5	-	-	200	SV330GF02N9CF5	SV330GF02V3CF5

Specifications for SV430 Normally Open

Normally Open



Port Size	Orifice Size (ins.)	C _v	Min PSI	Operating Pressure Differential				Max Fluid Temp °F	Model Number	
				Max Pressure (PSI)					Normally Closed	
				Gas, Liquid		Steam			Brass	303 SS
AC	DC	AC	DC							
1/8	3/64	0.05	0	350	350	-	-	200	SV430GF02N8AC3	SV430GF02V2AC3
	1/16	0.1	0	200	200	-	-	200	SV430GF02N8AC5	SV430GF02V2AC5
	3/32	0.2	0	105	105	-	-	200	SV430GF02N8AC9	SV430GF02V2AC9
	1/8	0.3	0	60	60	-	-	200	SV430GF02N8AD5	SV430GF02V2AD5
1/4	3/64	0.05	0	600	600	-	-	200	SV430GF02N8BC3	SV430GF02V3BC3
	1/16	0.1	0	325	325	-	-	200	SV430GF02N8BC5	SV430GF02V3BC5
	3/32	0.2	0	150	150	-	-	200	SV430GF02N8BC9	SV430GF02V3BC9
	1/8	0.3	0	100	100	-	-	200	SV430GF02N8BD5	SV430GF02V3BD5
3/16	3/16	0.65	0	40	40	-	-	200	SV430GF02N8BE1	SV430GF02V3BE1
	3/16	0.65	0	-	-	30	-	298	SV430GH02N8BE1	SV430GH02T3BE1

SV330 & SV430 SPECIFICATIONS

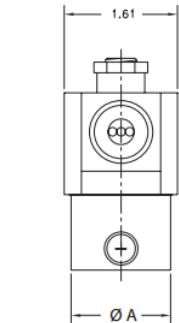
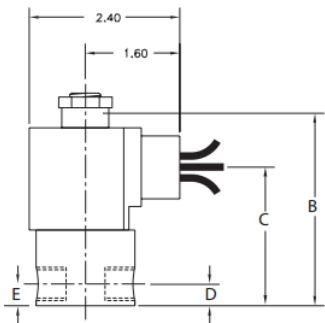
Part Number Configurator

Example Part Number: **SV330GF02N2A D5**

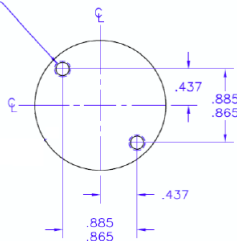
S	V	3	3	0	G	F	0	2	N	2	A	D	5				
Numbers 1 thru 5					6	7	8-9		10	11	12	13-14		15			
Series	Operating Mode	Housing		Coil Insulation	Applicable Voltage		Seal Material		Body Code		Port Connection		Orifice Size (in.)		Option		
SV330	Normally Closed	A	Conduit	F	Class F	02	120V/60Hz	N	Buna N	2	SS 1/8" NPT	A	1/8	C1	1/32	M	Manual Override
		P	Open Frame	H	Class H	04	220V/60Hz 220V/50Hz	V	FKM	3	SS 1/4" & 3/8" NPT	B	1/4	C3	3/64	L	Latching
SV430	Normally Open	B	Grommet			01	24V/60Hz	T	PTFE	8	Brass 1/8" & 1/4" NPT	C	3/8	C5	1/16	NSF	NSF-61 / ANSI61 Seals
		X	Explosion Proof NEMA 7			15	12V DC	J	Buna N*	9	Brass 3/8" NPT			C7	5/64		
		S	Junction Box			16	24V DC	C	Ethylene Propylene**					C9	3/32		
		G	Watertight NEMA4					L	FKM*					D5	1/8		
								E	Ethylene Propylene*					D7	5/32		
													E1	3/16			
														E7	1/4		
														F1	9/32		
														F5	3/8		

- 1.) *Standard shading coil material is copper. "J", "L", "E" has silver shading coil.
- 2.) Coil wattage for SV330 is 10W for AC & DC, for SV430 11W on AC and 10W on DC. Contact Valcor for low wattage options.
- 3.) **Use Seal Material "C" with optional NSF seal selection.

External Dimensions



10-32 UNF-3B
.240 MIN. DEPTH FULL
THREAD - .560 MAX
DRILL DEPTH
(THREAD PER E-448-12)
C'SINK B97/90° X .195/.225
DIA. (2) PLACES.



Body Code	Port Connection NPT (in.)	Model	A	B	C	D	E	F	G	Weight (lbs)
2, 3, 8	1/8	SV330	1.22	3.10	1.71	0.29		0.61	0.73	0.90
		SV430		3.43						
		SV330	1.63	2.78	1.63			0.91	1.10	
		SV430		2.94						
9	1/4	SV330	1.63	3.14	1.71	0.37		0.91	1.10	
		SV430		3.51						
	3/8	SV330	1.63	3.63	2.12	0.45	0.98		1.3	
		SV430		3.06						
	1/4	SV330	1.63	3.14	1.71				1.10	
		SV430		3.51						
3/8	SV330	1.89	3.30	1.43	0.44			1.10		