

## DESCRIPTION

The SV23 series pinch valves are available in normally closed, normally open and close-open configuration. These pinch valves are used in applications where the media needs to be completely isolated from any valve parts. They are available in single or multi tube configuration and are capable of handling a wide range of corrosive or high purity fluids. These compact, low power valves come equipped with medical grade silicon tubing or they can be used to pinch other compatible user specified tubing.

## APPLICATION

The SV23 series pinch valve is suitable for a broad range of applications, including:

- Medical Instrumentation
- Blood Handling/Analysis
- Clinical or Chemical Analyzers
- Chemical Mixing/Dispensing
- Laboratory Equipment

## FEATURES

- Medical grade silicon tubing
- Compact size
- Handles aggressive fluids
- Tolerant to light particulates
- Low power consumption solenoids
- Direct acting constructions
- Long life expectancy

## VALCOR SV23 SPECIFICATIONS

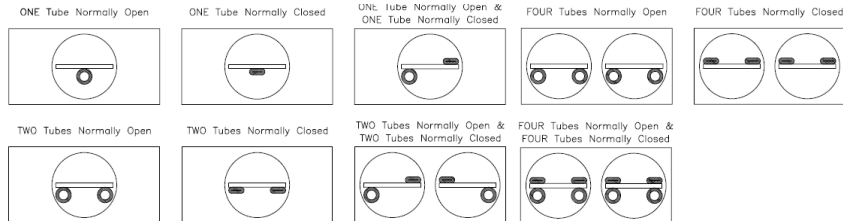
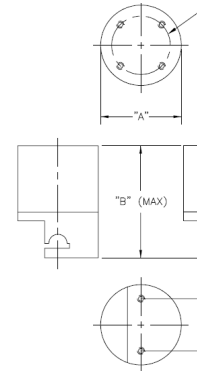
### Construction

#### Valve Parts in Contact With Fluid

Tubing Dow Corning medical grade silicon

Model	A	B (Max.)	C	D	Hole Thread
SV23A	0.75"	1.15"	0.5"	0.3536*	2-56
SV23B	1.0"	1.8"	0.687"	0.687"	4-40
SV23C	1.25"	2.25"	0.875"	0.875"	4-40
SV23D	1.5"	2.6"	1.125"	1.125"	4-40

\* This dimension is not on the center line as shown in the drawing.



### Specifications

Series	Voltage	Configuration	# of Tubes	Tube P/N	ID	OD	Max. Pressure	Wattage
1 or 2 Tube Pinch Valve - Normally Closed (NC), Closed-Open (CO)								
SV23A	12/DC or 24 D/C	NC or NO	1	-01	1/32"	1/16"	30	1
		NO	1	-11	1/32"	3/32"	30	1
		CO	2	-01	1/32"	1/16"	30	1
SV23B	12/DC or 24 D/C	NC or NO	1 or 2	-11	1/32"	3/32"	30	1.5
		NC or NO	1 or 2	-21	1/16"	1/8"	30	1.5
		CO	2	-11	1/32"	3/32"	30	1.5
		CO	2	-21	1/16"	1/8"	30	1.5
SV23C	12/DC or 24 D/C	NC or NO	1 or 2	-22	1/16"	3/16"	30	4.2
		NC or NO	1	-42	1/8"	1/4"	20	4.2
		CO	2	-22	1/16"	3/16"	30	4.2
		CO	2	-42	1/8"	1/4"	20	4.2
SV23D	12/DC or 24 D/C	NC or NO	2	-42	1/8"	1/4"	20	7.2
		NC or NO	1	-62	3/16"	5/16"	20	7.2
		NC or NO	1	-82	1/4"	3/8"	20	7.2
		CO	2	-62	3/16"	5/16"	20	7.2
4 or 8 Tube Pinch Valve - Normally Closed (NC), Normally Open (NO), Closed-Open (CO)								
SV23B	12/DC or 24 D/C	CO	4 or 8	-11	1/32"	3/32"	30	1.5
SV23C	12/DC or 24 D/C	NC or NO	4	-11	1/32"	3/32"	30	4.2
		NC or NO	4	-21	1/16"	1/8"	30	4.2
		CO	4 or 8	-11	1/32"	3/32"	30	4.2
		CO	4 or 8	-21	1/16"	1/8"	30	4.2
		CO	4	-22	1/16"	3/16"	30	4.2
SV23D	12/DC or 24 D/C	NC	4	-42	1/8"	1/4"	30	7.2
		CO	4 or 8	-42	1/8"	1/4"	30	7.2

Alternate voltage of 115/50-60 Hz available. Consult factory.

Valves come with 12" length of medical grade silicon tubing. Other lengths available.

CO configuration is 3-way, meaning 1 tube is closed and 1 tube is open.

#### How to specify part numbers

Series	Voltage	Configuration	# of Tubes	Tube Size
SV23B	24	N	1	-11
SV23C	12	CO	8	-11

Example: Equals SV23B24NC1-11 (one 1/32" ID x 3/32" OD tube, normally closed, 24/DC voltage)

Equals SV23C12CO8-11 (eight 1/32" ID x 3/32" OD tubes, 4 NC & 4 NO, 12/DC voltage)