



Day in, day out.

The Valcor family of Teflon® valves.





Ready. Willing. Able.



Introducing the family of Teflon® valves from Valcor Scientific.

They say great things come in small packages. And with Valcor Scientific's new line of Teflon® valves, your designs and applications will stand head and shoulders above all the rest.

Available in two-way normally closed, two-way normally open, and three-way models, these diaphragm-isolated valves each offer a powerful combination of durability, performance, and flexibility through their all-Teflon construction and compact size. And thanks to a wide range of optional features – as well as Valcor Scientific's expert custom design capabilities – you're sure to find the valve that precisely fits the technical and scheduling demands of your project.

Best of all, each valve comes backed by the reliability of Valcor Scientific, where for nearly a half-century, we've helped engineers through innovation, support, and a partnership that takes designs to a higher level.

A legacy of reliability.

When you work with Valcor Scientific, you tap into the power of a reliable, proven organization geared to support you at every turn.

It all begins with our product line: a wide array of readily available, finely crafted components that meet the needs of both your designs and deadlines. From Solenoid Operated Metering Pumps and "Dri-Solenoid" Valves to Teflon or Multi-Purpose Solenoid Valves and more, our 18,000-drawing library is ready to be adapted to your toughest specifications.

Even more importantly, our network of highly trained sales representatives is always available to assist you in every stage of your work. So whether you require our customization services, our "design to fit" capabilities, or any of our standard configurations, your local representative will quickly and knowledgeably guide you through the process.

Central to our work is a dedication to the latest advances in design technology and the rigors of multi-environment laboratory testing. Through this dedication, we continue a mission we began nearly fifty years ago: to provide the reliable, proven components you need to rapidly move your products to market.



One source, many options.

Ranging in size from subminiature to one and one-half inch diameters, the Valcor Scientific family of Teflon valves delivers performance and durability normally reserved for larger components. Each valve features:

- All-Teflon construction – diaphragm, body, and sealing area – to accommodate a wide variety of corrosive or high purity media, and to ensure the media flowing through your application remains uncontaminated.
- Low internal volumes for better fluid control.
- Life expectancy in the millions of cycles to keep your applications built for the long-haul.
- Low wattage to minimize power consumption.
- Multiple configurations, a wide variety of port styles, and alternate materials including PEEK and PPS to add untold flexibility to your design process.

With their ability to add efficiency and durability to the act of breaking down materials and analyzing components, these Teflon valves are perfect for use in a wide range of clinical and industrial settings. From DNA synthesizers, blood gas analyzers, and slide staining to auto samplers, flame photometers and gel permeation chromatography, your applications deserve the reliability and innovation of Valcor Scientific.

For more information, call Valcor Scientific at 1-973-467-8400 or visit www.valcor.com/teflon.

Valves that fit your designs – and your deadlines.

Our 2-way Normally Closed, 2-way Normally Open, and 3-way Solenoid Valves utilize Teflon diaphragms to seal on a Teflon, PEEK or PPS seat, which is integral to the valve body. As a result, these valves are capable of handling a wide variety of corrosive or high purity media by isolating all metallic components from the media. In addition, they feature:

- Low internal volume
- Compact size
- Life expectancy in millions of cycles
- All-Teflon construction; alternate body materials available
- Low power consumption
- Fast response time

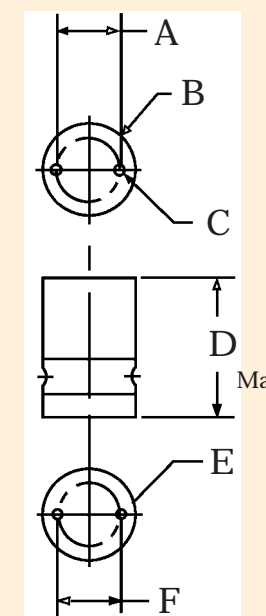


2-way Normally Closed Dri-Solenoid Valve (Model SV74)

Performance specifications:

Model #	Orifice Size	PSIG	Voltage (1)	Watts	Internal Vol.	Ports
SV74P61T-1	0.040" (1.016)	VAC-30 (2 bar)	12	1.00	14µl	10-32
SV74P25T-1	0.062" (1.575)	VAC-30 (2 bar)	12	1.50	41µl	1/4-28
SV74P60T-1	0.095" (2.413)	VAC-30 (2 bar)	12	4.20	103µl	1/4-28
SV74P48T-1	0.156" (3.962)	VAC-30 (2 bar)	12	7.20	335µl	1/8 NPT
SV74P61T-2	0.040" (1.016)	VAC-30 (2 bar)	24	1.00	14µl	10-32
SV74P25T-2	0.062" (1.575)	VAC-30 (2 bar)	24	1.50	41µl	1/4-28
SV74P60T-2	0.095" (2.413)	VAC-30 (2 bar)	24	4.20	103µl	1/4-28
SV74P48T-2	0.156" (3.962)	VAC-30 (2 bar)	24	7.20	335µl	1/8 NPT

(1) Alternate voltages of 6VDC (-0) and 115V/ 60 Hz (-3) available upon request. *Also available with PEEK ('P') or PPS ('S') bodies. High Pressure ('HP') version available – to 100 PSIG. (Metric dimensions in parenthesis)



Outline dimensions:

Model #	A	B	C	D	E	F
SV74P61T	.500 (12.7)	ø.750 (ø19.0)	#2–56	1.15 (29.2)	#2–56	.500 (12.7)
SV74P25T	.687 (17.44)	ø1.00 (ø25.4)	#4–40	1.50 (38.1)	#4–40	.687 (17.44)
SV74P60T	.884 (22.45)	ø1.25 (ø31.75)	#4–40	1.78 (45.2)	#4–40	.884 (22.45)
SV74P48T	1.125 (28.58)	ø1.50 (ø38.1)	#4–40	2.10 (53.3)	#4–40	1.125 (28.58)

(Metric dimensions in parenthesis)

For more information, call Valcor Scientific at 1-973-467-8400 or visit www.valcor.com/teflon.

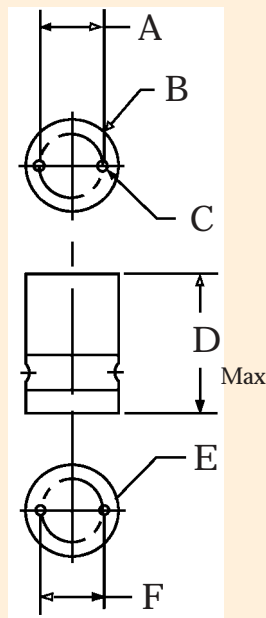


2-way Normally Open Dri-Solenoid Valve (Model SV76)

Performance specifications:

Model #	Orifice Size	PSIG	Voltage (1)	Watts	Internal Vol.	Ports
SV76P61T-1	0.040" (1.016)	VAC-30 (2 bar)	12	1.00	14µl	10-32
SV76P25T-1	0.062" (1.575)	VAC-30 (2 bar)	12	1.50	41µl	1/4-28
SV76P60T-1	0.095" (2.413)	VAC-30 (2 bar)	12	4.20	103µl	1/4-28
SV76P48T-1	0.156" (3.962)	VAC-30 (2 bar)	12	7.20	335µl	1/8 NPT
SV76P61T-2	0.040" (1.016)	VAC-30 (2 bar)	24	1.00	14µl	10-32
SV76P25T-2	0.062" (1.575)	VAC-30 (2 bar)	24	1.50	41µl	1/4-28
SV76P60T-2	0.095" (2.413)	VAC-30 (2 bar)	24	4.20	103µl	1/4-28
SV76P48T-2	0.156" (3.962)	VAC-30 (2 bar)	24	7.20	335µl	1/8 NPT

(1) Alternate voltages of 6VDC (-0) and 115V/ 60 Hz (-3) available upon request.
 *Also available with PEEK (P) or PPS (S) bodies. High Pressure (HP) version available - to 100 PSIG.
 (Metric dimensions in parenthesis)



Outline dimensions:

Model #	A	B	C	D	E	F
SV76P61T	.500 (12.7)	ø.750 (ø19.0)	#2-56	1.15 (29.2)	#2-56	.500 (12.7)
SV76P25T	.687 (17.44)	ø1.00 (ø25.4)	#4-40	1.50 (38.1)	#4-40	.687 (17.44)
SV76P60T	.884 (22.45)	ø1.25 (ø31.75)	#4-40	1.78 (45.2)	#4-40	.884 (22.45)
SV76P48T	1.125 (28.58)	ø1.50 (ø38.1)	#4-40	2.10 (53.3)	#4-40	1.125 (28.58)

(Metric dimensions in parenthesis)

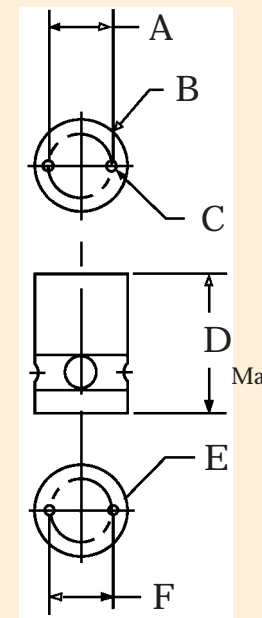


3-way Dri-Solenoid Valve (Model SV75)

Performance specifications:

Model #	Orifice Size	PSIG	Voltage (1)	Watts	Internal Vol.	Ports
SV75P61T-1	0.040" (1.016)	VAC-30 (2 bar)	12	1.00	12µl	10-32
SV75P25T-1	0.062" (1.575)	VAC-30 (2 bar)	12	1.50	58µl	1/4-28
SV75P60T-1	0.095" (2.413)	VAC-30 (2 bar)	12	4.20	121µl	1/4-28
SV75P48T-1	0.156" (3.962)	VAC-30 (2 bar)	12	7.20	399µl	1/8 NPT
SV75P61T-2	0.040" (1.016)	VAC-30 (2 bar)	24	1.00	12µl	10-32
SV75P25T-2	0.062" (1.575)	VAC-30 (2 bar)	24	1.50	58µl	1/4-28
SV75P60T-2	0.095" (2.413)	VAC-30 (2 bar)	24	4.20	121µl	1/4-28
SV75P48T-2	0.156" (3.962)	VAC-30 (2 bar)	24	7.20	399µl	1/8 NPT

(1) Alternate voltages of 6VDC (-0) and 115V/ 60 Hz (-3) available upon request.
 *Also available with PEEK (P) or PPS (S) bodies. High Pressure (HP) version available - to 100 PSIG.
 (Metric dimensions in parenthesis)



Outline dimensions:

Model #	A	B	C	D	E	F
SV75P61T	.500 (12.7)	ø.750 (ø19.0)	#2-56	1.15 (29.2)	#2-56	.500 (12.7)
SV75P25T	.687 (17.44)	ø1.00 (ø25.4)	#4-40	1.50 (38.1)	#4-40	.687 (17.44)
SV75P60T	.884 (22.45)	ø1.25 (ø31.75)	#4-40	1.78 (45.2)	#4-40	.884 (22.45)
SV75P48T	1.125 (28.58)	ø1.50 (ø38.1)	#4-40	2.10 (53.3)	#4-40	1.125 (28.58)

(Metric dimensions in parenthesis)

Extended family.

At Valcor Scientific, our family of Teflon Valves offers many options, to provide you with a broad combination of possibilities for your designs. Call us for more information on additional available options.

For more information, call Valcor Scientific at 1-973-467-8400 or visit www.valcor.com/teflon.

Pinch Valves



Manifolds



Alternate Materials



PEEK

PPS

Mixing Valves



For more information, call Valcor Scientific at 1-973-467-8400 or visit www.valcor.com/teflon.

Support group.

At Valcor Scientific, we understand that until it reaches the marketplace, a great idea is really only that – a great idea. That's why we offer the industry's most reliable technical support, to ensure your design cycle is as efficient and condensed as possible.

To help, we've assembled a team of sales representatives who are all deeply knowledgeable about the challenges faced by engineers every day. Your local representative will work with you closely to determine which of our products is most appropriate for the project you've undertaken. Then, they will guide you through the fine-tuning process – with our expert customization and design-to-fit services.

As a result, we do more than simply provide you with the most dependable, durable valves on the market today. We also offer the reliability you need to meet the exacting demands of your schedule – from design stage, to pilot stage, to production and beyond.



To learn more about Valcor's family of Teflon valves, please visit www.valcor.com/teflon, contact your local sales representative, or call 1-973-467-8400 today.

Valcor Scientific
Valcor Engineering Corporation
2 Lawrence Road
Springfield, New Jersey 07081

Phone: 973-467-8400
Fax: 973-467-9592

www.valcor.com