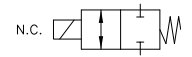


SV74

2-way Normally Closed
Diaphragm Isolation Construction



Valcor Teflon Instrumentation Series



DESCRIPTION

The SV74 series valves utilize a Teflon diaphragm to seal on a Teflon seat. As a result, these valves are capable of handling a wide range of corrosive or high purity media by isolating all metallic components from the fluid path. Other materials including PEEK & Kel-F are available as body materials. Consult factory for availability.

APPLICATIONS

The SV74 diaphragm isolation series is suitable for a broad range of applications, including:

- Ink Jet Printers
- Chromatography
- Clinical or Chemical Analyzer
- Chemical mixing/dispensing
- Laboratory equipment

FEATURES

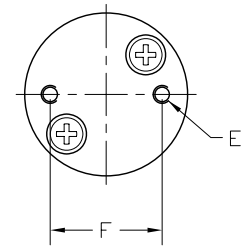
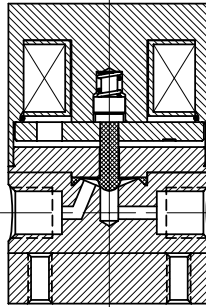
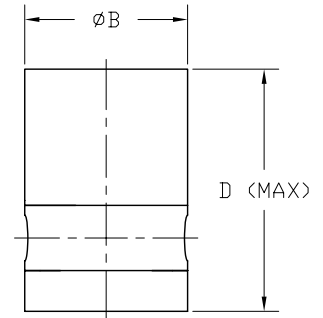
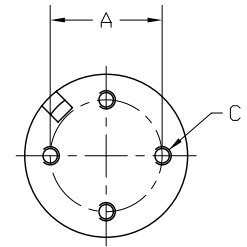
- Diaphragm isolation construction for high purity process
- Handles corrosive and aggressive fluids
- Compact low dead volume designs
- Low power consumption solenoids
- Bidirectional flow
- Direct acting constructions
- Long life expectancy



VALCOR SV74 SPECIFICATIONS

Construction

Valve Parts in Contact with Fluid						
Body	Teflon					
Diaphragm	Teflon					
Other Parts						
Armature	430F SS					
Spring	303 SS					
Coil Housing	Nickle Plated Steel					
Base Plate	Nickle Plated Steel					
Body is also available in PEEK or Kel F Consult factory for availability of specific constructions						
Envelope Dimensions:						
Dimensions						
Model Number	A (in.)	ΦB (in.)	C	D (in.)	E	F (in.)
SV74P61T	0.50	0.75	#2 - 56	1.15	#2 - 56	0.50
SV74P25T	0.687	1.00	#4 - 40	1.50	#4 - 40	0.687
SV74P60T	0.884	1.25	#4 - 40	1.78	#4 - 40	0.844
SV74P48T	1.125	1.50	#4 - 40	2.10	#4 - 40	1.125



Specifications

Port Size	Orifice Size (ins.)	Max. Operating Pressure (PSIG)		Model Number	Voltage	Wattage	Internal Volume (μl)
		Gas & Liquid (PSI)	Vacuum (in. Hg)				
SV74 2-way Normally Closed							
10 - 32	0.040"	30	28	SV74P61T-1	12 VDC	1.0	14
1/4 - 28	0.062"	30	28	SV74P25T-1	12 VDC	1.5	41
1/4 - 28	0.095"	30	28	SV74P60T-1	12 VDC	4.2	103
1/8" NPS*	0.156"	30	28	SV74P48T-1	12 VDC	7.2	335
10 - 32	0.040"	30	28	SV74P61T-2	24 VDC	1.0	14
1/4 - 28	0.062"	30	28	SV74P25T-2	24 VDC	1.5	41
1/4 - 28	0.095"	30	28	SV74P60T-2	24 VDC	4.2	103
1/8" NPS*	0.156"	30	28	SV74P48T-2	24 VDC	7.2	335

Alternate voltage of 6 VDC & 115V/60 HZ available upon request. Please consult factory for availability & part number.

High pressure version available up to 100 PSI (-HP³). Please consult factory for availability of specific constructions.

*1/8"-27 NPS (National Pipe Straight) thread. Flat bottom.